



CEAM7 Monoclonal Antibody

Catalog No	BYmab-05435
Isotype	IgG
Reactivity	Human;Rat;Mouse;
Applications	WB
Gene Name	CEACAM7 CGM2
Protein Name	Carcinoembryonic antigen-related cell adhesion molecule 7 (Carcinoembryonic antigen CGM2)
Immunogen	Synthesized peptide derived from part region of human protein
Specificity	CEAM7 Monoclonal Antibody detects endogenous levels of protein.
Formulation	Liquid in PBS containing 50% glycerol, and 0.02% sodium azide.
Source	Monoclonal, Mouse,IgG
Purification	The antibody was affinity-purified from mouse antiserum by affinity-chromatography using epitope-specific immunogen.
Dilution	WB 1:500-2000
Concentration	1 mg/ml
Purity	≥90%
Storage Stability	-20°C/1 year
Synonyms	
Observed Band	29kD
Cell Pathway	Cell membrane ; Lipid-anchor, GPI-anchor . Apical cell membrane . Localized to the apical glycocalyx surface. .
Tissue Specificity	Expressed in columnar epithelial cells of the colon (at protein level) (PubMed:10436421). Strongly down-regulated in colonic adenocarcinomas.
Function	similarity:Belongs to the immunoglobulin superfamily. CEA family.,similarity:Contains 1 Ig-like C2-type (immunoglobulin-like) domain.,similarity:Contains 1 Ig-like V-type (immunoglobulin-like) domain.,tissue specificity:Strongly down-regulated in colonic adenocarcinomas.,
Background	This gene encodes a cell surface glycoprotein and member of the carcinoembryonic antigen (CEA) family of proteins. Expression of this gene may be downregulated in colon and rectal cancer. Additionally, lower expression levels of this gene may be predictive of rectal cancer recurrence. This gene is present in a CEA family gene cluster on chromosome 19. Alternative splicing results in multiple transcript variants. [provided by RefSeq, Jul 2015],

Nanjing BYabscience technology Co.,Ltd



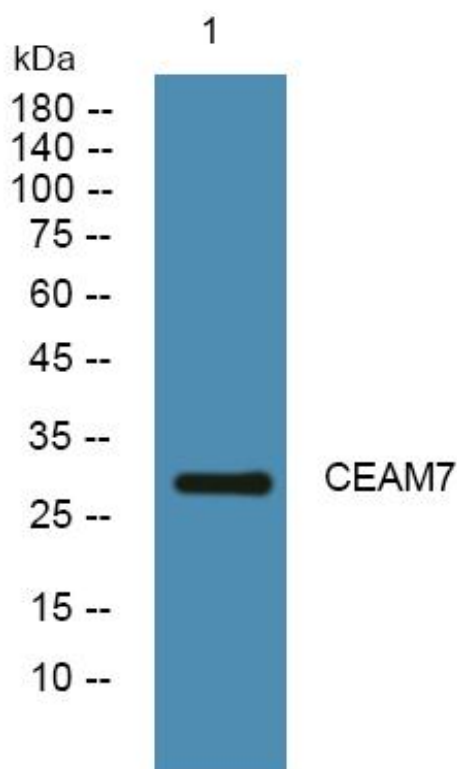
matters needing attention

Avoid repeated freezing and thawing!

Usage suggestions

This product can be used in immunological reaction related experiments. For more information, please consult technical personnel.

Products Images



Western Blot analysis of various cells using CEAM7 Monoclonal Antibody