



# CEA20 Monoclonal Antibody

Catalog No	BYmab-05434
Isotype	IgG
Reactivity	Human;Rat;Mouse;
Applications	WB
Gene Name	CEACAM20 UNQ9366/PRO34155
Protein Name	Carcinoembryonic antigen-related cell adhesion molecule 20
Immunogen	Synthesized peptide derived from part region of human protein
Specificity	CEA20 Monoclonal Antibody detects endogenous levels of protein.
Formulation	Liquid in PBS containing 50% glycerol, and 0.02% sodium azide.
Source	Monoclonal, Mouse,IgG
Purification	The antibody was affinity-purified from mouse antiserum by affinity-chromatography using epitope-specific immunogen.
Dilution	WB 1:500-2000
Concentration	1 mg/ml
Purity	≥90%
Storage Stability	-20°C/1 year
Synonyms	
Observed Band	64kD
Cell Pathway	Cell projection, microvillus membrane ; Single-pass type I membrane protein . Apical cell membrane ; Single-pass type I membrane protein . Colocalizes with PTPRH and CEACAM1 at the apical brush border of intestinal cells.
Tissue Specificity	Small intestine,
Function	similarity:Belongs to the immunoglobulin superfamily. CEA family.,similarity:Contains 4 Ig-like C2-type (immunoglobulin-like) domains.,
Background	similarity:Belongs to the immunoglobulin superfamily. CEA family.,similarity:Contains 4 Ig-like C2-type (immunoglobulin-like) domains.,
matters needing attention	Avoid repeated freezing and thawing!

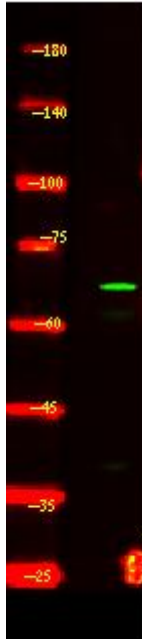
Nanjing BYabscience technology Co.,Ltd



#### Usage suggestions

This product can be used in immunological reaction related experiments. For more information, please consult technical personnel.

## Products Images



Western Blot analysis of various cells using CEA20 Monoclonal Antibody

Nanjing BYabs science technology Co.,Ltd

网址: [www.njbybio.com](http://www.njbybio.com)

官方热线: 025-5229-8998

监督电话: 15950492658