



CEA16 Monoclonal Antibody

Catalog No	BYmab-05432
Isotype	IgG
Reactivity	Human;Mouse
Applications	WB
Gene Name	CEACAM16 CEAL2
Protein Name	Carcinoembryonic antigen-related cell adhesion molecule 16 (Carcinoembryonic antigen-like 2)
Immunogen	Synthesized peptide derived from part region of human protein
Specificity	CEA16 Monoclonal Antibody detects endogenous levels of protein.
Formulation	Liquid in PBS containing 50% glycerol, and 0.02% sodium azide.
Source	Monoclonal, Mouse,IgG
Purification	The antibody was affinity-purified from mouse antiserum by affinity-chromatography using epitope-specific immunogen.
Dilution	WB 1:500-2000
Concentration	1 mg/ml
Purity	≥90%
Storage Stability	-20°C/1 year
Synonyms	
Observed Band	46kD
Cell Pathway	Secreted . Localizes to the tip of cochlear outer hair cells and to the tectorial membrane. .
Tissue Specificity	
Function	similarity:Belongs to the immunoglobulin superfamily. CEA family.,similarity:Contains 2 Ig-like C2-type (immunoglobulin-like) domains.,
Background	The protein encoded by this gene is a secreted glycoprotein that in mouse interacts with tectorial membrane proteins in the inner ear. The encoded adhesion protein is found in cochlear outer hair cells and appears to be important for proper hearing over an extended frequency range. Defects in this gene likely are a cause of non-syndromic autosomal dominant hearing loss. [provided by RefSeq, May 2012],
matters needing attention	Avoid repeated freezing and thawing!

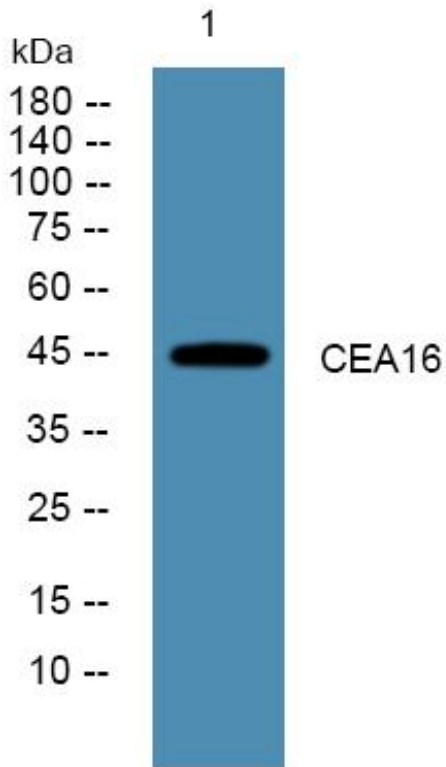
Nanjing BYabscience technology Co.,Ltd



Usage suggestions

This product can be used in immunological reaction related experiments. For more information, please consult technical personnel.

Products Images



Western Blot analysis of various cells using CEA16 Monoclonal Antibody

Nanjing BYabs science technology Co.,Ltd

网址: www.njbybio.com

官方热线: 025-5229-8998

监督电话: 15950492658