



# CBPO Monoclonal Antibody

Catalog No	BYmab-05431
Isotype	IgG
Reactivity	Human;Rat;Mouse;
Applications	WB
Gene Name	CPO
Protein Name	Carboxypeptidase O (CPO) (EC 3.4.17.-)
Immunogen	Synthesized peptide derived from part region of human protein
Specificity	CBPO Monoclonal Antibody detects endogenous levels of protein.
Formulation	Liquid in PBS containing 50% glycerol, and 0.02% sodium azide.
Source	Monoclonal, Mouse,IgG
Purification	The antibody was affinity-purified from mouse antiserum by affinity-chromatography using epitope-specific immunogen.
Dilution	WB 1:500-2000
Concentration	1 mg/ml
Purity	≥90%
Storage Stability	-20°C/1 year
Synonyms	
Observed Band	41kD
Cell Pathway	Apical cell membrane ; Lipid-anchor, GPI-anchor .
Tissue Specificity	Detected in enterocytes of the ileum.
Function	cofactor:Binds 1 zinc ion per subunit.,function:Probable carboxypeptidase which may cleave proteins with C-terminal acidic residues.,similarity:Belongs to the peptidase M14 family.,
Background	carboxypeptidase O(CPO) Homo sapiens This gene is a member of the metallo-carboxypeptidase gene family. [provided by RefSeq, Jan 2011],
matters needing attention	Avoid repeated freezing and thawing!

Nanjing BYabscience technology Co.,Ltd

网址: [www.njbybio.com](http://www.njbybio.com)

官方热线: 025-5229-8998

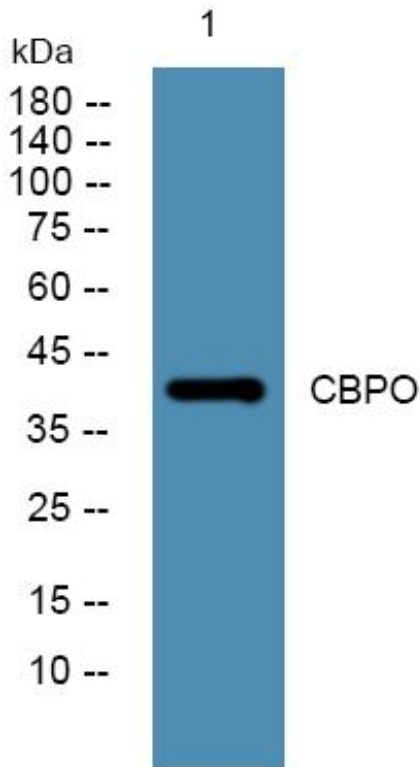
监督电话: 15950492658



### Usage suggestions

This product can be used in immunological reaction related experiments. For more information, please consult technical personnel.

## Products Images



Western Blot analysis of various cells using CBPO Monoclonal Antibody

Nanjing BYabscience technology Co.,Ltd

网址: [www.njbybio.com](http://www.njbybio.com)

官方热线: 025-5229-8998

监督电话: 15950492658