



CBPB1 Monoclonal Antibody

| | |
|---------------------------|--|
| Catalog No | BYmab-05429 |
| Isotype | IgG |
| Reactivity | Human;Rat;Mouse; |
| Applications | WB |
| Gene Name | CPB1 CPB PCPB |
| Protein Name | Carboxypeptidase B (EC 3.4.17.2) (Pancreas-specific protein) (PASP) |
| Immunogen | Synthesized peptide derived from part region of human protein |
| Specificity | CBPB1 Monoclonal Antibody detects endogenous levels of protein. |
| Formulation | Liquid in PBS containing 50% glycerol, and 0.02% sodium azide. |
| Source | Monoclonal, Mouse,IgG |
| Purification | The antibody was affinity-purified from mouse antiserum by affinity-chromatography using epitope-specific immunogen. |
| Dilution | WB 1:500-2000 |
| Concentration | 1 mg/ml |
| Purity | ≥90% |
| Storage Stability | -20°C/1 year |
| Synonyms | |
| Observed Band | 45kD |
| Cell Pathway | Secreted . Zymogen granule lumen . |
| Tissue Specificity | Pancreas. |
| Function | catalytic activity:Preferential release of a C-terminal lysine or arginine amino acid.,cofactor:Binds 1 zinc ion per subunit.,similarity:Belongs to the peptidase M14 family.,tissue specificity:Pancreas., |
| Background | Three different procarboxypeptidases A and two different procarboxypeptidases B have been isolated. The B1 and B2 forms differ from each other mainly in isoelectric point. Carboxypeptidase B1 is a highly tissue-specific protein and is a useful serum marker for acute pancreatitis and dysfunction of pancreatic transplants. It is not elevated in pancreatic carcinoma. [provided by RefSeq, Jul 2008], |

Nanjing BYabscience technology Co.,Ltd



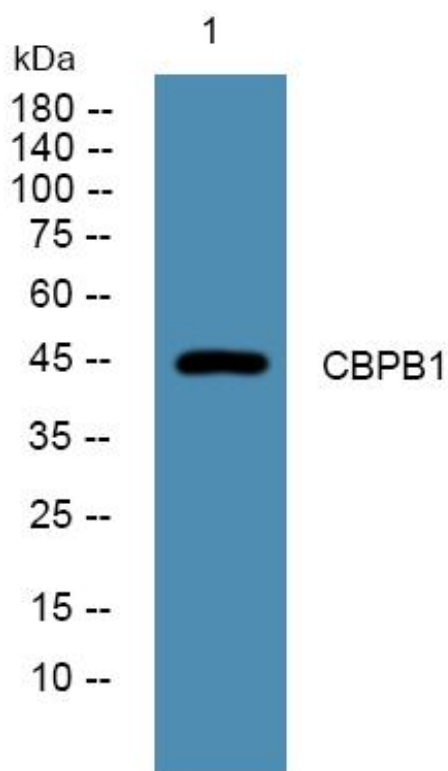
matters needing attention

Avoid repeated freezing and thawing!

Usage suggestions

This product can be used in immunological reaction related experiments. For more information, please consult technical personnel.

Products Images



Western Blot analysis of various cells using CBPB1 Monoclonal Antibody