



# CHST5 Monoclonal Antibody

<b>Catalog No</b>	BYmab-05422
<b>Isotype</b>	IgG
<b>Reactivity</b>	Human;Rat;Mouse;
<b>Applications</b>	WB
<b>Gene Name</b>	CHST5
<b>Protein Name</b>	Carbohydrate sulfotransferase 5 (EC 2.8.2.-) (Galactose/N-acetylglucosamine/N-acetylglucosamine 6-O-sulfotransferase 4-alpha) (GST4-alpha) (Intestinal N-acetylglucosamine-6-O-sulfotransferase) (I-GlcN
<b>Immunogen</b>	Synthesized peptide derived from part region of human protein
<b>Specificity</b>	CHST5 Monoclonal Antibody detects endogenous levels of protein.
<b>Formulation</b>	Liquid in PBS containing 50% glycerol, and 0.02% sodium azide.
<b>Source</b>	Monoclonal, Mouse,IgG
<b>Purification</b>	The antibody was affinity-purified from mouse antiserum by affinity-chromatography using epitope-specific immunogen.
<b>Dilution</b>	WB 1:500-2000
<b>Concentration</b>	1 mg/ml
<b>Purity</b>	≥90%
<b>Storage Stability</b>	-20°C/1 year
<b>Synonyms</b>	
<b>Observed Band</b>	45kD
<b>Cell Pathway</b>	Golgi apparatus membrane ; Single-pass type II membrane protein . Golgi membrane, early secretory pathway.
<b>Tissue Specificity</b>	Predominantly expressed in small and large intestines and colon. Weakly expressed in lymphocytes. Not expressed in other tissues. Down-regulated in colonic adenocarcinomas.
<b>Function</b>	function:Catalyzes the transfer of sulfate to position 6 of non-reducing N-acetylglucosamine (GlcNAc) residues and O-linked sugars of mucin-type acceptors. Acts on the non-reducing terminal GlcNAc of short carbohydrate substrates. However, it does not transfer sulfate to longer carbohydrate substrates that have poly-N-acetylglucosamine structures. Has no activity toward keratan. Not involved in generating HEV-expressed ligands for L-selectin. Its substrate specificity may be influenced by its subcellular location.,online information:GlycoGene database,similarity:Belongs to the sulfotransferase 1

**Nanjing BYabscience technology Co.,Ltd**



family. Gal/GlcNAc/GalNAc subfamily.,subcellular location:Golgi membrane, early secretory pathway.,tissue specificity:Predominantly expressed in small and large intestines and colon. Weakly expressed in lymphocytes. Not expressed in other tissues. Down-regulated in colonic adenocarcinomas.,

#### Background

The protein encoded by this gene belongs to the Gal/GalNAc/GlcNAc 6-O-sulfotransferase (GST) family, members of which catalyze the transfer of sulfate to position 6 of galactose (Gal), N-acetylgalactosamine (GalNAc), or N-acetylglucosamine (GlcNAc) residues within proteoglycans, and sulfation of O-linked sugars of mucin-type acceptors. Carbohydrate sulfation plays a critical role in many biologic processes. This gene is predominantly expressed in colon and small intestine. [provided by RefSeq, Aug 2011],

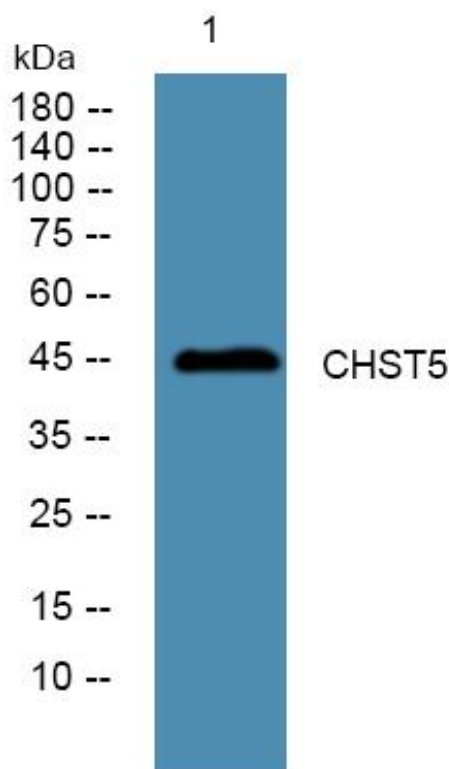
#### matters needing attention

Avoid repeated freezing and thawing!

#### Usage suggestions

This product can be used in immunological reaction related experiments. For more information, please consult technical personnel.

## Products Images



Western Blot analysis of various cells using CHST5 Monoclonal Antibody