



CALL6 Monoclonal Antibody

Catalog No	BYmab-05409
Isotype	IgG
Reactivity	Human;Rat;Mouse;
Applications	WB
Gene Name	CALML6 CAGLP CALGP
Protein Name	Calmodulin-like protein 6 (Calglandulin-like protein)
Immunogen	Synthesized peptide derived from part region of human protein
Specificity	CALL6 Monoclonal Antibody detects endogenous levels of protein.
Formulation	Liquid in PBS containing 50% glycerol, and 0.02% sodium azide.
Source	Monoclonal, Mouse,IgG
Purification	The antibody was affinity-purified from mouse antiserum by affinity-chromatography using epitope-specific immunogen.
Dilution	WB 1:500-2000
Concentration	1 mg/ml
Purity	≥90%
Storage Stability	-20°C/1 year
Synonyms	
Observed Band	19kD
Cell Pathway	Cytoplasm . Nucleus .
Tissue Specificity	Expressed in prostate, thymus, heart, skeleton muscle, bone marrow and ovary.
Function	similarity:Belongs to the calmodulin family. Calglandulin subfamily.,similarity:Contains 4 EF-hand domains.,tissue specificity:Expressed in prostate, thymus, heart, skeleton muscle, bone marrow and ovary.,
Background	similarity:Belongs to the calmodulin family. Calglandulin subfamily.,similarity:Contains 4 EF-hand domains.,tissue specificity:Expressed in prostate, thymus, heart, skeleton muscle, bone marrow and ovary.,
matters needing attention	Avoid repeated freezing and thawing!

Nanjing BYabscience technology Co.,Ltd

网址: www.njbybio.com

官方热线: 025-5229-8998

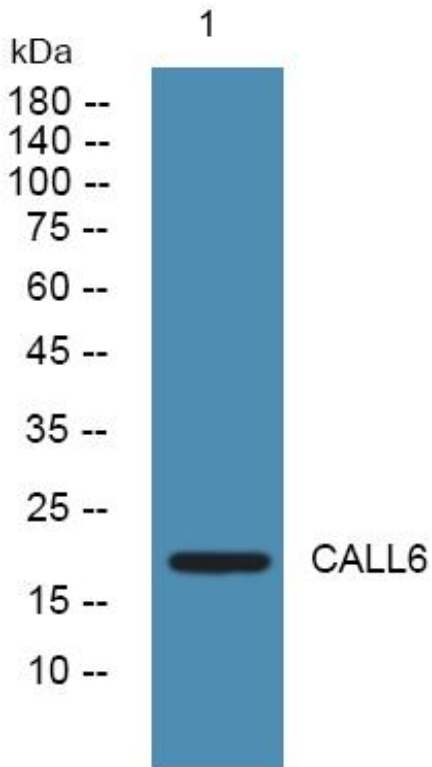
监督电话: 15950492658



Usage suggestions

This product can be used in immunological reaction related experiments. For more information, please consult technical personnel.

Products Images



Western Blot analysis of various cells using CALL6 Monoclonal Antibody

Nanjing BYabscience technology Co.,Ltd

网址: www.njbybio.com

官方热线: 025-5229-8998

监督电话: 15950492658