



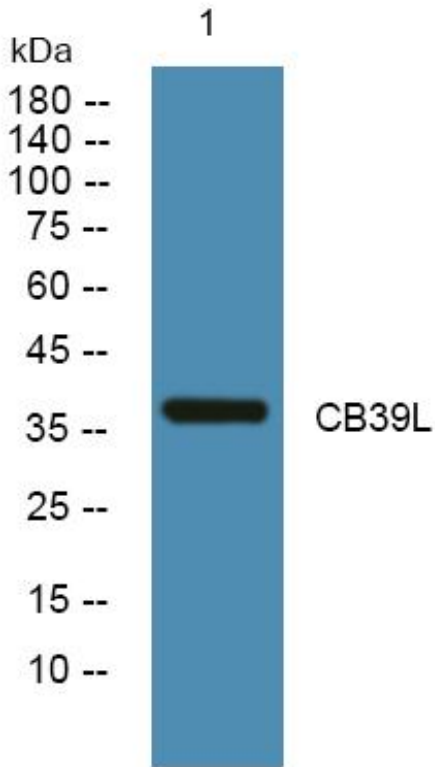
# CB39L Monoclonal Antibody

Catalog No	BYmab-05400
Isotype	IgG
Reactivity	Human;Mouse
Applications	WB
Gene Name	CAB39L
Protein Name	Calcium-binding protein 39-like (Antigen MLAA-34) (MO25beta) (Mo25-like protein)
Immunogen	Synthesized peptide derived from part region of human protein
Specificity	CB39L Monoclonal Antibody detects endogenous levels of protein.
Formulation	Liquid in PBS containing 50% glycerol, and 0.02% sodium azide.
Source	Monoclonal, Mouse,IgG
Purification	The antibody was affinity-purified from mouse antiserum by affinity-chromatography using epitope-specific immunogen.
Dilution	WB 1:500-2000
Concentration	1 mg/ml
Purity	≥90%
Storage Stability	-20°C/1 year
Synonyms	
Observed Band	37kD
Cell Pathway	cytosol,extracellular exosome,
Tissue Specificity	Monocytic leukemia,Placenta,
Function	miscellaneous:Found in serum of 50% of patients with acute monocytic leukemia.,similarity:Belongs to the Mo25 family.,
Background	miscellaneous:Found in serum of 50% of patients with acute monocytic leukemia.,similarity:Belongs to the Mo25 family.,
matters needing attention	Avoid repeated freezing and thawing!
Usage suggestions	This product can be used in immunological reaction related experiments. For more information, please consult technical personnel.

Nanjing BYabscience technology Co.,Ltd



## Products Images



Western Blot analysis of various cells using CB39L  
Monoclonal Antibody

Nanjing BYabs science technology Co.,Ltd

网址: [www.njbybio.com](http://www.njbybio.com)

官方热线: 025-5229-8998

监督电话: 15950492658