



CAB39 Monoclonal Antibody

Catalog No	BYmab-05399
Isotype	IgG
Reactivity	Human;Mouse
Applications	WB
Gene Name	CAB39 MO25 CGI-66
Protein Name	Calcium-binding protein 39 (MO25alpha) (Protein Mo25)
Immunogen	Synthesized peptide derived from part region of human protein
Specificity	CAB39 Monoclonal Antibody detects endogenous levels of protein.
Formulation	Liquid in PBS containing 50% glycerol, and 0.02% sodium azide.
Source	Monoclonal, Mouse,IgG
Purification	The antibody was affinity-purified from mouse antiserum by affinity-chromatography using epitope-specific immunogen.
Dilution	WB 1:500-2000
Concentration	1 mg/ml
Purity	≥90%
Storage Stability	-20°C/1 year
Synonyms	
Observed Band	37kD
Cell Pathway	Cytoplasm .
Tissue Specificity	Duodenum,Hypothalamus,Testis,
Function	function:Together with the STE20-related adaptor-alpha (STRAD alpha) pseudo kinase, forms a regulatory complex caMABLE of stimulating the activity of STK11.,similarity:Belongs to the Mo25 family.,
Background	function:Together with the STE20-related adaptor-alpha (STRAD alpha) pseudo kinase, forms a regulatory complex caMABLE of stimulating the activity of STK11.,similarity:Belongs to the Mo25 family.,
matters needing attention	Avoid repeated freezing and thawing!

Nanjing BYabscience technology Co.,Ltd

网址: www.njbybio.com

官方热线: 025-5229-8998

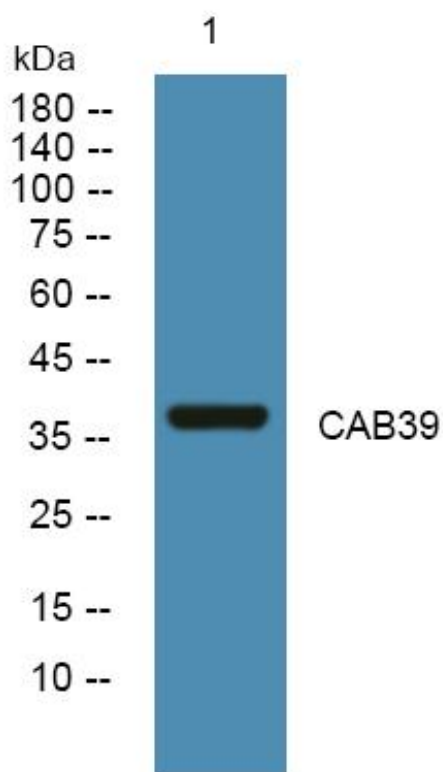
监督电话: 15950492658



Usage suggestions

This product can be used in immunological reaction related experiments. For more information, please consult technical personnel.

Products Images



Western Blot analysis of various cells using CAB39 Monoclonal Antibody