



# CHERP Monoclonal Antibody

Catalog No	BYmab-05392
Isotype	IgG
Reactivity	Human;Mouse
Applications	WB
Gene Name	CHERP DAN26 SCAF6
Protein Name	Calcium homeostasis endoplasmic reticulum protein (ERPROT 213-21) (SR-related CTD-associated factor 6)
Immunogen	Synthesized peptide derived from part region of human protein
Specificity	CHERP Monoclonal Antibody detects endogenous levels of protein.
Formulation	Liquid in PBS containing 50% glycerol, and 0.02% sodium azide.
Source	Monoclonal, Mouse,IgG
Purification	The antibody was affinity-purified from mouse antiserum by affinity-chromatography using epitope-specific immunogen.
Dilution	WB 1:500-2000
Concentration	1 mg/ml
Purity	≥90%
Storage Stability	-20°C/1 year
Synonyms	
Observed Band	100kD
Cell Pathway	Cytoplasm . Cytoplasm, perinuclear region . Endoplasmic reticulum . Distributed throughout the cytoplasm and also localizes to the perinuclear region of both human erythroleukemia (HEL) cells and Jurkat cells. Colocalizes with ITPR1. .
Tissue Specificity	Expressed in brain, placenta, lung, liver, kidney, pancreas, cardiac and skeletal muscle, and in cultured HEL and Dami cells.
Function	function:Involved in calcium homeostasis, growth and proliferation.,sequence caution:Translation N-terminally shortened.,similarity:Contains 1 CID domain.,similarity:Contains 1 G-patch domain.,similarity:Contains 1 SURP motif repeat.,subcellular location:Distributed throughout the cytoplasm and also localizes to the perinuclear region of both human erythroleukemia (HEL) cells and Jurkat cells. Colocalizes with ITPR1.,tissue specificity:Expressed in brain, placenta, lung, liver, kidney, pancreas, cardiac and skeletal muscle, and in cultured HEL and Dami cells.,

Nanjing BYabscience technology Co.,Ltd



## Background

function:Involved in calcium homeostasis, growth and proliferation.,sequence caution:Translation N-terminally shortened.,similarity:Contains 1 CID domain.,similarity:Contains 1 G-patch domain.,similarity:Contains 1 SURP motif repeat.,subcellular location:Distributed throughout the cytoplasm and also localizes to the perinuclear region of both human erythroleukemia (HEL) cells and Jurkat cells. Colocalizes with ITPR1.,tissue specificity:Expressed in brain, placenta, lung, liver, kidney, pancreas, cardiac and skeletal muscle, and in cultured HEL and Dami cells.,

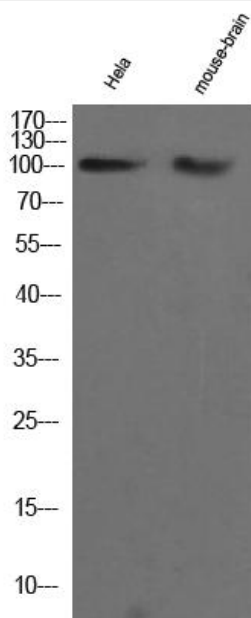
## matters needing attention

Avoid repeated freezing and thawing!

## Usage suggestions

This product can be used in immunological reaction related experiments. For more information, please consult technical personnel.

## Products Images



Western Blot analysis of various cells using CHERP Monoclonal Antibody