



BRI3 Monoclonal Antibody

Catalog No	BYmab-05386
Isotype	IgG
Reactivity	Human;Mouse;Rat
Applications	WB
Gene Name	BRI3
Protein Name	Brain protein I3 (pRGR2)
Immunogen	Synthesized peptide derived from part region of human protein
Specificity	BRI3 Monoclonal Antibody detects endogenous levels of protein.
Formulation	Liquid in PBS containing 50% glycerol, and 0.02% sodium azide.
Source	Monoclonal, Mouse,IgG
Purification	The antibody was affinity-purified from mouse antiserum by affinity-chromatography using epitope-specific immunogen.
Dilution	WB 1:500-2000
Concentration	1 mg/ml
Purity	≥90%
Storage Stability	-20°C/1 year
Synonyms	
Observed Band	13kD
Cell Pathway	Lysosome membrane ; Multi-pass membrane protein .; [Isoform 1]: Cytoplasm, perinuclear region . Co-localizes with MGAT1 and IFITM3 at the perinuclear region. .; [Isoform 2]: Cytoplasm . Nucleus . Diffuse localization in the cytoplasm and nucleus. .
Tissue Specificity	Brain,Cervix carcinoma,Eye,Gastric adenocarcinoma,Ovary,
Function	similarity:Belongs to the BRI3 family.,
Background	similarity:Belongs to the BRI3 family.,
matters needing attention	Avoid repeated freezing and thawing!

Nanjing BYabscience technology Co.,Ltd

网址: www.njbybio.com

官方热线: 025-5229-8998

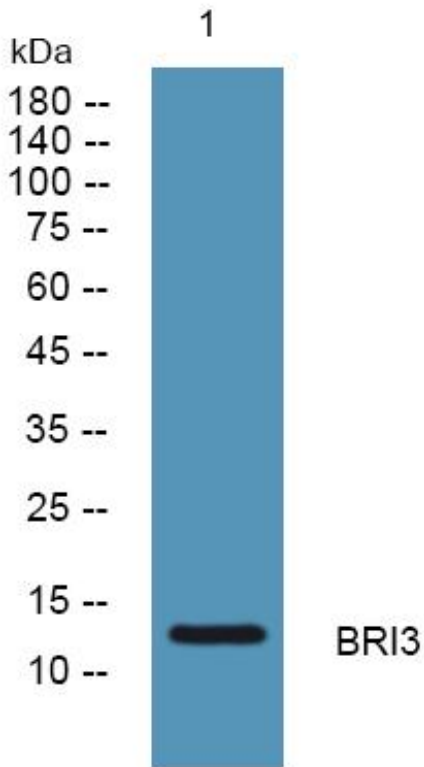
监督电话: 15950492658



Usage suggestions

This product can be used in immunological reaction related experiments. For more information, please consult technical personnel.

Products Images



Western Blot analysis of various cells using BRI3 Monoclonal Antibody

Nanjing BYabscience technology Co.,Ltd

网址: www.njbybio.com

官方热线: 025-5229-8998

监督电话: 15950492658