



IRK8 Monoclonal Antibody

Catalog No	BYmab-05367
Isotype	IgG
Reactivity	Human;Rat;Mouse;
Applications	WB
Gene Name	KCNJ8
Protein Name	ATP-sensitive inward rectifier potassium channel 8 (Inward rectifier K(+) channel Kir6.1) (Potassium channel, inwardly rectifying subfamily J member 8) (uKATP-1)
Immunogen	Synthesized peptide derived from human protein . at AA range: 50-130
Specificity	IRK8 Monoclonal Antibody detects endogenous levels of protein.
Formulation	Liquid in PBS containing 50% glycerol, and 0.02% sodium azide.
Source	Monoclonal, Mouse,IgG
Purification	The antibody was affinity-purified from mouse antiserum by affinity-chromatography using epitope-specific immunogen.
Dilution	WB 1:500-2000
Concentration	1 mg/ml
Purity	≥90%
Storage Stability	-20°C/1 year
Synonyms	
Observed Band	46kD
Cell Pathway	Membrane; Multi-pass membrane protein .
Tissue Specificity	Predominantly detected in fetal and adult heart.
Function	function:This potassium channel is controlled by G proteins. Inward rectifier potassium channels are characterized by a greater tendency to allow potassium to flow into the cell rather than out of it. Their voltage dependence is regulated by the concentration of extracellular potassium; as external potassium is raised, the voltage range of the channel opening shifts to more positive voltages. The inward rectification is mainly due to the blockage of outward current by internal magnesium. Can be blocked by external barium.,similarity:Belongs to the inward rectifier-type potassium channel family.,
Background	Potassium channels are present in most mammalian cells, where they participate in a wide range of physiologic responses. The protein encoded by this gene is an integral membrane protein and inward-rectifier type potassium channel. The

Nanjing BYabscience technology Co.,Ltd



encoded protein, which has a greater tendency to allow potassium to flow into a cell rather than out of a cell, is controlled by G-proteins. Defects in this gene may be a cause of J-wave syndromes and sudden infant death syndrome (SIDS). [provided by RefSeq, May 2012],

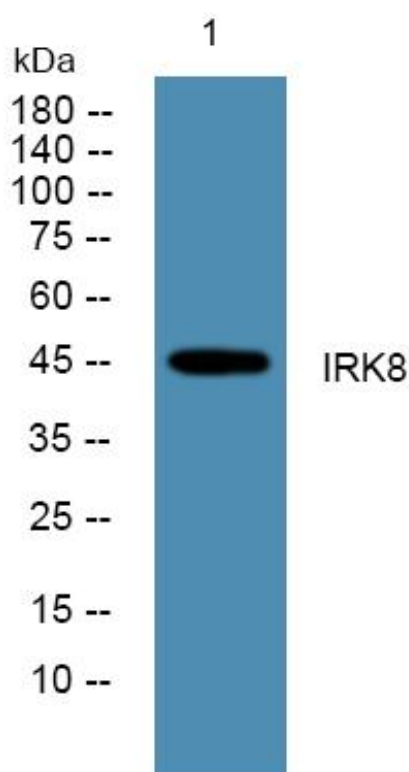
matters needing attention

Avoid repeated freezing and thawing!

Usage suggestions

This product can be used in immunological reaction related experiments. For more information, please consult technical personnel.

Products Images



Western Blot analysis of various cells using IRK8 Monoclonal Antibody