



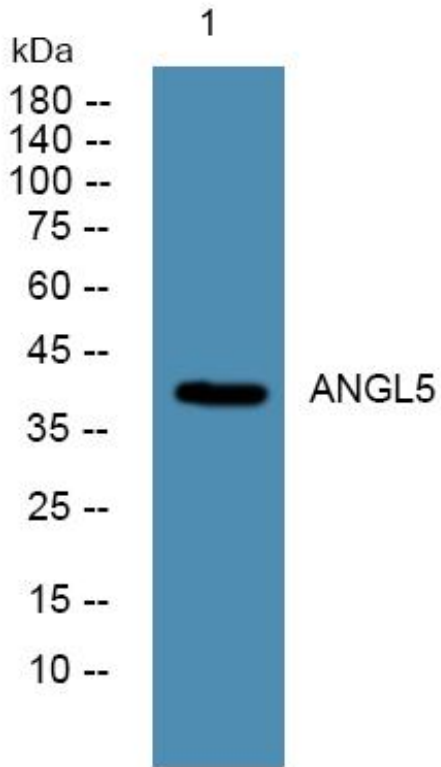
ANGL5 Monoclonal Antibody

Catalog No	BYmab-05320
Isotype	IgG
Reactivity	Human;Rat;Mouse;
Applications	WB
Gene Name	ANGPTL5 UNQ5795/PRO19600
Protein Name	Angiopoietin-related protein 5 (Angiopoietin-like protein 5)
Immunogen	Synthesized peptide derived from human protein . at AA range: 230-310
Specificity	ANGL5 Monoclonal Antibody detects endogenous levels of protein.
Formulation	Liquid in PBS containing 50% glycerol, and 0.02% sodium azide.
Source	Monoclonal, Mouse,IgG
Purification	The antibody was affinity-purified from mouse antiserum by affinity-chromatography using epitope-specific immunogen.
Dilution	WB 1:500-2000
Concentration	1 mg/ml
Purity	≥90%
Storage Stability	-20°C/1 year
Synonyms	
Observed Band	42kD
Cell Pathway	Secreted .
Tissue Specificity	Mainly expressed in adult heart.
Function	similarity:Contains 1 fibrinogen C-terminal domain.,tissue specificity:Mainly expressed in adult heart.,
Background	similarity:Contains 1 fibrinogen C-terminal domain.,tissue specificity:Mainly expressed in adult heart.,
matters needing attention	Avoid repeated freezing and thawing!
Usage suggestions	This product can be used in immunological reaction related experiments. For more information, please consult technical personnel.

Nanjing BYabscience technology Co.,Ltd



Products Images



Western Blot analysis of various cells using ANGL5
Monoclonal Antibody