



AAMP Monoclonal Antibody

Catalog No	BYmab-05317
Isotype	IgG
Reactivity	Human;Rat;Mouse;
Applications	WB
Gene Name	AAMP
Protein Name	Angio-associated migratory cell protein
Immunogen	Synthesized peptide derived from human protein . at AA range: 330-410
Specificity	AAMP Monoclonal Antibody detects endogenous levels of protein.
Formulation	Liquid in PBS containing 50% glycerol, and 0.02% sodium azide.
Source	Monoclonal, Mouse,IgG
Purification	The antibody was affinity-purified from mouse antiserum by affinity-chromatography using epitope-specific immunogen.
Dilution	WB 1:500-2000
Concentration	1 mg/ml
Purity	≥90%
Storage Stability	-20°C/1 year
Synonyms	
Observed Band	47kD
Cell Pathway	Cell membrane. Cytoplasm.
Tissue Specificity	Expressed in metastatic melanoma, liver, skin, kidney, heart, lung, lymph node, skeletal muscle and brain, and also in A2058 melanoma cells and activated T-cells (at protein level). Expressed in blood vessels. Strongly expressed in endothelial cells, cytotrophoblasts, and poorly differentiated. colon adenocarcinoma cells found in lymphatics.
Function	function:Plays a role in angiogenesis and cell migration. In smooth muscle cell migration, may act through the RhoA pathway.,similarity:Contains 8 WD repeats.,tissue specificity:Expressed in metastatic melanoma, liver, skin, kidney, heart, lung, lymph node, skeletal muscle and brain, and also in A2058 melanoma cells and activated T cells (at protein level). Expressed in blood vessels. Strongly expressed in endothelial cells, cytotrophoblasts, and poorly differentiated. colon adenocarcinoma cells found in lymphatics.,

Nanjing BYabscience technology Co.,Ltd

网址: www.njbybio.com

官方热线: 025-5229-8998

监督电话: 15950492658



Background

The gene is a member of the immunoglobulin superfamily. The encoded protein is associated with angiogenesis, with potential roles in endothelial tube formation and the migration of endothelial cells. It may also regulate smooth muscle cell migration via the RhoA pathway. The encoded protein can bind to heparin and may mediate heparin-sensitive cell adhesion. [provided by RefSeq, Oct 2014],

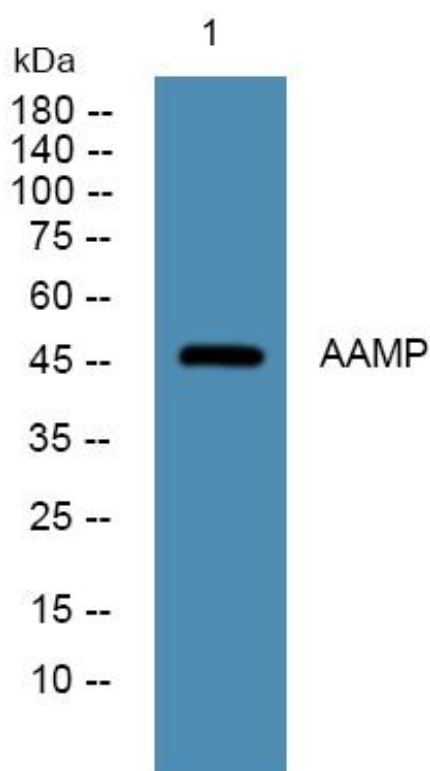
matters needing attention

Avoid repeated freezing and thawing!

Usage suggestions

This product can be used in immunological reaction related experiments. For more information, please consult technical personnel.

Products Images



Western Blot analysis of various cells using AAMP Monoclonal Antibody