



# A1ATR Monoclonal Antibody

Catalog No	BYmab-05307
Isotype	IgG
Reactivity	Human;Rat;Mouse;
Applications	WB
Gene Name	SERPINA2 ARGS ATR PIL
Protein Name	Putative alpha-1-antitrypsin-related protein (Serin A2)
Immunogen	Synthesized peptide derived from human protein . at AA range: 110-190
Specificity	A1ATR Monoclonal Antibody detects endogenous levels of protein.
Formulation	Liquid in PBS containing 50% glycerol, and 0.02% sodium azide.
Source	Monoclonal, Mouse,IgG
Purification	The antibody was affinity-purified from mouse antiserum by affinity-chromatography using epitope-specific immunogen.
Dilution	WB 1:500-2000
Concentration	1 mg/ml
Purity	≥90%
Storage Stability	-20°C/1 year
Synonyms	
Observed Band	46kD
Cell Pathway	Endoplasmic reticulum .
Tissue Specificity	Expressed in the liver, leukocytes and testis. Also detected in brain, colon, uterus, esophagus, spleen, trachea, kidney and lung.
Function	caution:Could be the product of a pseudogene.,domain:The reactive center loop (RCL) extends out from the body of the protein and directs binding to the target protease. The protease cleaves the serpin at the reactive site within the RCL, establishing a covalent linkage between the carboxyl group of the serpin reactive site and the serine hydroxyl of the protease. The resulting inactive serpin-protease complex is highly stable.,function:Could be a serine protease inhibitor.,similarity:Belongs to the serpin family.,
Background	This gene encodes a member of the serpin family of proteins, a group of proteins that inhibit serine proteases. The encoded intracellular glycoprotein is localized at the endoplasmic reticulum. This gene is a polymorphic pseudogene, with the non-functional allele being predominant in some populations. Some individuals,

Nanjing BYabscience technology Co.,Ltd



as represented by the reference genome allele, contain a 2kb coding region deletion and a start code mutation. [provided by RefSeq, Feb 2014],

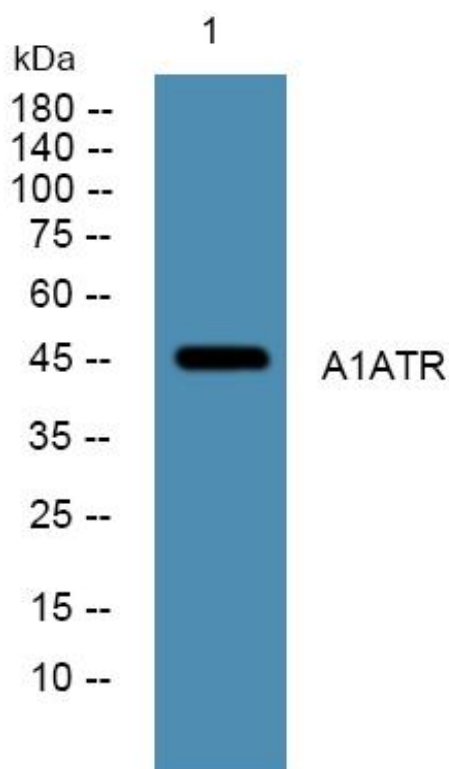
**matters needing attention**

Avoid repeated freezing and thawing!

**Usage suggestions**

This product can be used in immunological reaction related experiments. For more information, please consult technical personnel.

## Products Images



Western Blot analysis of various cells using A1ATR Monoclonal Antibody