



A1AG2 Monoclonal Antibody

Catalog No	BYmab-05306
Isotype	IgG
Reactivity	Human;Rat;Mouse;
Applications	WB
Gene Name	ORM2 AGP2
Protein Name	Alpha-1-acid glycoprotein 2 (AGP 2) (Orosomucoid-2) (OMD 2)
Immunogen	Synthesized peptide derived from human protein . at AA range: 40-120
Specificity	A1AG2 Monoclonal Antibody detects endogenous levels of protein.
Formulation	Liquid in PBS containing 50% glycerol, and 0.02% sodium azide.
Source	Monoclonal, Mouse,IgG
Purification	The antibody was affinity-purified from mouse antiserum by affinity-chromatography using epitope-specific immunogen.
Dilution	WB 1:500-2000
Concentration	1 mg/ml
Purity	≥90%
Storage Stability	-20°C/1 year
Synonyms	
Observed Band	22kD
Cell Pathway	Secreted.
Tissue Specificity	Expressed by the liver and secreted in plasma.
Function	function:Appears to function in modulating the activity of the immune system during the acute-phase reaction.,induction:Synthesis is controlled by glucocorticoids, interleukin-1 and interleukin-6, It increases 5- to 50-fold upon inflammation.,polymorphism:Many different variants of ORM2 are known.,similarity:Belongs to the calycin superfamily. Lipocalin family.,tissue specificity:Expressed by the liver and secreted in plasma.,
Background	This gene encodes a key acute phase plasma protein. Because of its increase due to acute inflammation, this protein is classified as an acute-phase reactant. The specific function of this protein has not yet been determined; however, it may be involved in aspects of immunosuppression. [provided by RefSeq, Jul 2008],

Nanjing BYabscience technology Co.,Ltd

网址: www.njbybio.com

官方热线: 025-5229-8998

监督电话: 15950492658



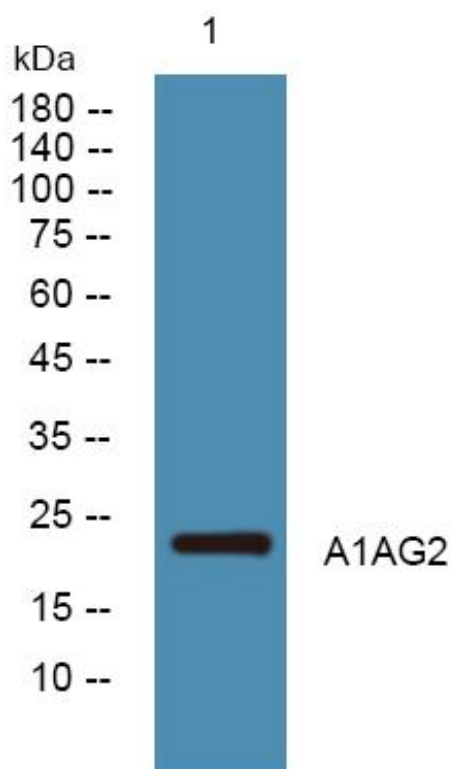
matters needing attention

Avoid repeated freezing and thawing!

Usage suggestions

This product can be used in immunological reaction related experiments. For more information, please consult technical personnel.

Products Images



Western Blot analysis of various cells using A1AG2 Monoclonal Antibody