



GALM Monoclonal Antibody

Catalog No	BYmab-05304
Isotype	IgG
Reactivity	Human;Mouse;Rat
Applications	WB
Gene Name	GALM BLOCK25
Protein Name	Aldose 1-epimerase (EC 5.1.3.3) (Galactose mutarotase)
Immunogen	Synthesized peptide derived from human protein . at AA range: 40-120
Specificity	GALM Monoclonal Antibody detects endogenous levels of protein.
Formulation	Liquid in PBS containing 50% glycerol, and 0.02% sodium azide.
Source	Monoclonal, Mouse,IgG
Purification	The antibody was affinity-purified from mouse antiserum by affinity-chromatography using epitope-specific immunogen.
Dilution	WB 1:500-2000
Concentration	1 mg/ml
Purity	≥90%
Storage Stability	-20°C/1 year
Synonyms	
Observed Band	37kD
Cell Pathway	Cytoplasm .
Tissue Specificity	Brain,Hematopoietic,Ovary,Skin,
Function	catalytic activity:Alpha-D-glucose = beta-D-glucose.,function:Mutarotase converts alpha-aldose to the beta-anomer. It is active on D-glucose, L-arabinose, D-xylose, D-galactose, maltose and lactose.,pathway:Carbohydrate metabolism; hexose metabolism.,similarity:Belongs to the aldose epimerase family.,subunit:Monomer.,
Background	This gene encodes an enzyme that catalyzes the epimerization of hexose sugars such as glucose and galactose. The encoded protein is expressed in the cytoplasm and has a preference for galactose. The encoded protein may be required for normal galactose metabolism by maintaining the equilibrium of alpha and beta anomers of galactose.[provided by RefSeq, Mar 2009],

Nanjing BYabscience technology Co.,Ltd

网址: www.njbybio.com

官方热线: 025-5229-8998

监督电话: 15950492658



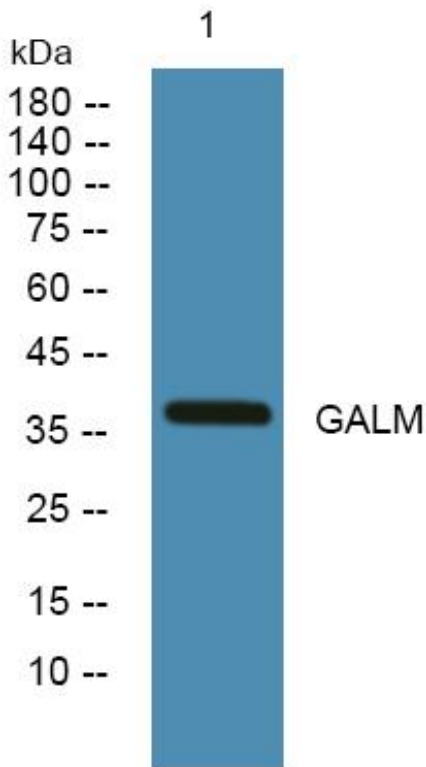
matters needing attention

Avoid repeated freezing and thawing!

Usage suggestions

This product can be used in immunological reaction related experiments. For more information, please consult technical personnel.

Products Images



Western Blot analysis of various cells using GALM Monoclonal Antibody