



RP25L Monoclonal Antibody

Catalog No	BYmab-05299
Isotype	IgG
Reactivity	Human;Mouse
Applications	WB
Gene Name	RPP25L C9orf23
Protein Name	Ribonuclease P protein subunit p25-like protein (RNase P protein subunit-like p25) (Rpp25-like protein)
Immunogen	Synthesized peptide derived from human protein . at AA range: 100-180
Specificity	RP25L Monoclonal Antibody detects endogenous levels of protein.
Formulation	Liquid in PBS containing 50% glycerol, and 0.02% sodium azide.
Source	Monoclonal, Mouse,IgG
Purification	The antibody was affinity-purified from mouse antiserum by affinity-chromatography using epitope-specific immunogen.
Dilution	WB 1:500-2000
Concentration	1 mg/ml
Purity	≥90%
Storage Stability	-20°C/1 year
Synonyms	
Observed Band	17kD
Cell Pathway	Nucleus .
Tissue Specificity	Skin,
Function	similarity:Belongs to the histone-like Alba family.,
Background	This gene encodes a protein that appears to belong to a family of evolutionarily related proteins (DUF78), that may share one or more domains in common. Members of this family are small archaeobacterial proteins with no known function. Alternative splicing has been observed at this locus and two variants, both encoding the same protein, have been identified. [provided by RefSeq, Jul 2008],
matters needing attention	Avoid repeated freezing and thawing!

Nanjing BYabscience technology Co.,Ltd

网址: www.njbybio.com

官方热线: 025-5229-8998

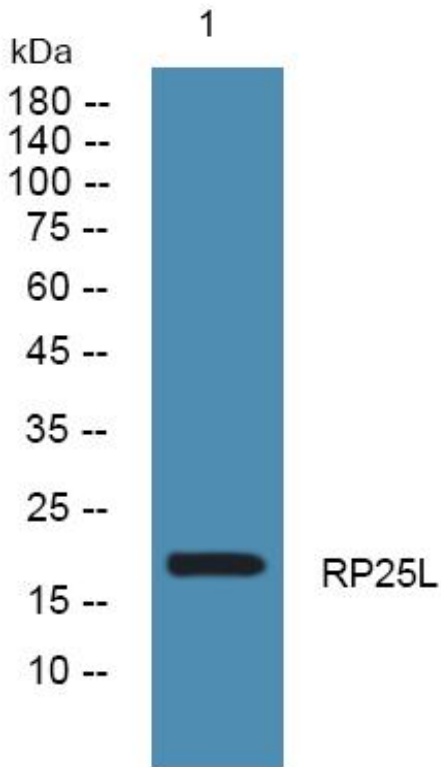
监督电话: 15950492658



Usage suggestions

This product can be used in immunological reaction related experiments. For more information, please consult technical personnel.

Products Images



Western Blot analysis of various cells using RP25L Monoclonal Antibody

Nanjing BYabs science technology Co.,Ltd

网址: www.njbybio.com

官方热线: 025-5229-8998

监督电话: 15950492658