



# ADT2 Monoclonal Antibody

Catalog No	BYmab-05293
Isotype	IgG
Reactivity	Human;Mouse;Rat
Applications	WB
Gene Name	SLC25A5 ANT2
Protein Name	ADP/ATP translocase 2 (ADP,ATP carrier protein 2) (ADP,ATP carrier protein, fibroblast isoform) (Adenine nucleotide translocator 2) (ANT 2) (Solute carrier family 25 member 5)
Immunogen	Synthesized peptide derived from human protein . at AA range: 40-120
Specificity	ADT2 Monoclonal Antibody detects endogenous levels of protein.
Formulation	Liquid in PBS containing 50% glycerol, and 0.02% sodium azide.
Source	Monoclonal, Mouse,IgG
Purification	The antibody was affinity-purified from mouse antiserum by affinity-chromatography using epitope-specific immunogen.
Dilution	WB 1:500-2000
Concentration	1 mg/ml
Purity	≥90%
Storage Stability	-20°C/1 year
Synonyms	
Observed Band	32kD
Cell Pathway	Mitochondrion inner membrane ; Multi-pass membrane protein . Membrane ; Multi-pass membrane protein . May localize to non-mitochondrial membranes. .
Tissue Specificity	Expressed in erythrocytes (at protein level).
Function	function:Catalyzes the exchange of ADP and ATP across the mitochondrial inner membrane.,miscellaneous:The transmembrane helices are not perpendicular to the plane of the membrane, but cross the membrane at an angle. Odd-numbered transmembrane helices exhibit a sharp kink, due to the presence of a conserved proline residue.,similarity:Belongs to the mitochondrial carrier family.,similarity:Contains 3 Solcar repeats.,subunit:Homodimer. Interacts with HIV-1 Vpr.,
Background	This gene is a member of the mitochondrial carrier subfamily of solute carrier protein genes. The product of this gene functions as a gated pore that translocates ADP from the cytoplasm into the mitochondrial matrix and ATP from

Nanjing BYabscience technology Co.,Ltd



the mitochondrial matrix into the cytoplasm. The protein forms a homodimer embedded in the inner mitochondria membrane. Suppressed expression of this gene has been shown to induce apoptosis and inhibit tumor growth. The human genome contains several non-transcribed pseudogenes of this gene.[provided by RefSeq, Jun 2013],

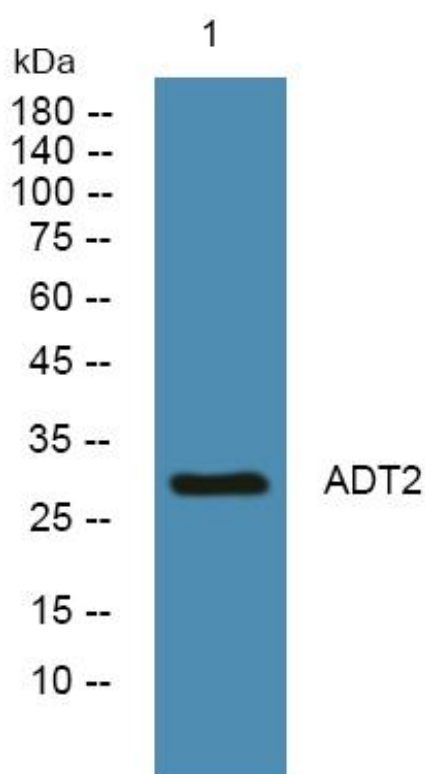
**matters needing attention**

Avoid repeated freezing and thawing!

**Usage suggestions**

This product can be used in immunological reaction related experiments. For more information, please consult technical personnel.

## Products Images



Western Blot analysis of various cells using ADT2 Monoclonal Antibody