



LYPA2 Monoclonal Antibody

Catalog No	BYmab-05278
Isotype	IgG
Reactivity	Human;Mouse;Rat
Applications	WB
Gene Name	LYPLA2 APT2
Protein Name	Acyl-protein thioesterase 2 (APT-2) (EC 3.1.2.-) (Lysophospholipase II) (LPL-II) (LysoPLA II)
Immunogen	Synthesized peptide derived from human protein . at AA range: 30-110
Specificity	LYPA2 Monoclonal Antibody detects endogenous levels of protein.
Formulation	Liquid in PBS containing 50% glycerol, and 0.02% sodium azide.
Source	Monoclonal, Mouse,IgG
Purification	The antibody was affinity-purified from mouse antiserum by affinity-chromatography using epitope-specific immunogen.
Dilution	WB 1:500-2000
Concentration	1 mg/ml
Purity	≥90%
Storage Stability	-20°C/1 year
Synonyms	
Observed Band	25kD
Cell Pathway	Cytoplasm .
Tissue Specificity	Expressed in various breast cancer cell lines.
Function	catalytic activity:Palmitoyl-protein + H(2)O = palmitate + protein.,function:May hydrolyze fatty acids from S-acylated cysteine residues in proteins such as trimeric G alpha proteins or HRAS. Has lysophospholipase activity.,similarity:Belongs to the AB hydrolase 2 family.,
Background	Lysophospholipases are enzymes that act on biological membranes to regulate the multifunctional lysophospholipids. There are alternatively spliced transcript variants described for this gene but the full length nature is not known yet. [provided by RefSeq, Jul 2008],
matters needing attention	Avoid repeated freezing and thawing!

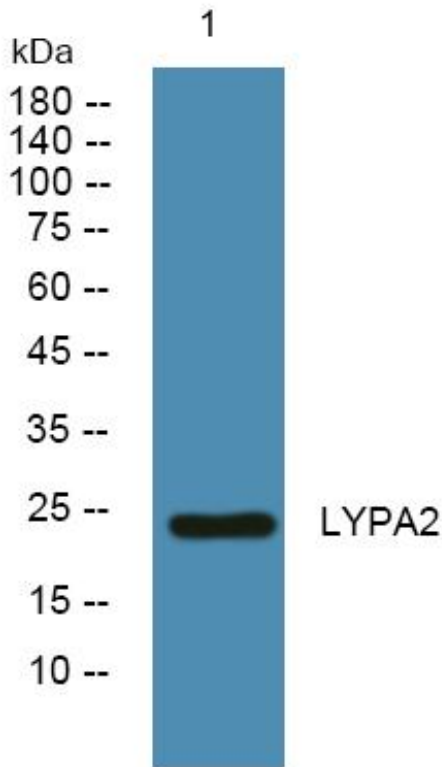
Nanjing BYabscience technology Co.,Ltd



Usage suggestions

This product can be used in immunological reaction related experiments. For more information, please consult technical personnel.

Products Images



Western Blot analysis of various cells using LYPA2 Monoclonal Antibody

Nanjing BYabs science technology Co.,Ltd

网址: www.njbybio.com

官方热线: 025-5229-8998

监督电话: 15950492658