



# NIP7 Monoclonal Antibody

Catalog No	BYmab-05258
Isotype	IgG
Reactivity	Human;Mouse;Rat
Applications	WB
Gene Name	NIP7 CGI-37 HSPC031 HSPC180 OK/SW-cl.76 OK/SW-cl.78
Protein Name	60S ribosome subunit biogenesis protein NIP7 homolog (KD93)
Immunogen	Synthesized peptide derived from human protein . at AA range: 90-170
Specificity	NIP7 Monoclonal Antibody detects endogenous levels of protein.
Formulation	Liquid in PBS containing 50% glycerol, and 0.02% sodium azide.
Source	Monoclonal, Mouse,IgG
Purification	The antibody was affinity-purified from mouse antiserum by affinity-chromatography using epitope-specific immunogen.
Dilution	WB 1:500-2000
Concentration	1 mg/ml
Purity	≥90%
Storage Stability	-20°C/1 year
Synonyms	
Observed Band	19kD
Cell Pathway	Nucleus, nucleolus .
Tissue Specificity	Expressed in hematopoietic stem/progenitor cells.
Function	function:Required for proper 27S pre-rRNA processing and 60S ribosome subunit assembly.,similarity:Belongs to the NIP7 family.,similarity:Contains 1 PUA domain.,subunit:Monomer. Interacts with pre-ribosome complex. May bind to RNA (By similarity). Interacts with NOL8. May interact with SBDS.,
Background	function:Required for proper 27S pre-rRNA processing and 60S ribosome subunit assembly.,similarity:Belongs to the NIP7 family.,similarity:Contains 1 PUA domain.,subunit:Monomer. Interacts with pre-ribosome complex. May bind to RNA (By similarity). Interacts with NOL8. May interact with SBDS.,
matters needing attention	Avoid repeated freezing and thawing!

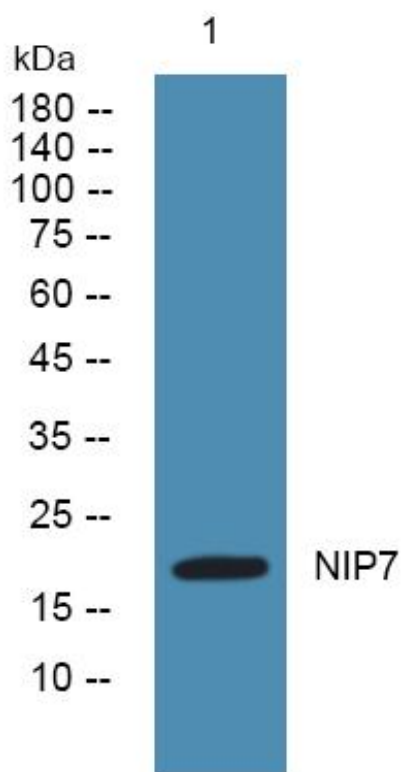
Nanjing BYabscience technology Co.,Ltd



### Usage suggestions

This product can be used in immunological reaction related experiments. For more information, please consult technical personnel.

## Products Images



Western Blot analysis of various cells using NIP7 Monoclonal Antibody

Nanjing BYabs science technology Co.,Ltd

网址: [www.njbybio.com](http://www.njbybio.com)

官方热线: 025-5229-8998

监督电话: 15950492658