



RL36L Monoclonal Antibody

Catalog No	BYmab-05255
Isotype	IgG
Reactivity	Human;Rat;Mouse;
Applications	WB
Gene Name	RPL36AL
Protein Name	60S ribosomal protein L36a-like
Immunogen	Synthesized peptide derived from human protein . at AA range: 30-110
Specificity	RL36L Monoclonal Antibody detects endogenous levels of protein.
Formulation	Liquid in PBS containing 50% glycerol, and 0.02% sodium azide.
Source	Monoclonal, Mouse,IgG
Purification	The antibody was affinity-purified from mouse antiserum by affinity-chromatography using epitope-specific immunogen.
Dilution	WB 1:500-2000
Concentration	1 mg/ml
Purity	≥90%
Storage Stability	-20°C/1 year
Synonyms	
Observed Band	11kD
Cell Pathway	Cytoplasm .
Tissue Specificity	Ubiquitously expressed.
Function	miscellaneous:This gene has no introns in its coding regions, and therefore, was most likely produced by retrotransposition of the original X-linked gene during evolution.;similarity:Belongs to the ribosomal protein L44e family.;tissue specificity:Ubiquitously expressed.,
Background	Cytoplasmic ribosomes, organelles that catalyze protein synthesis, consist of a small 40S subunit and a large 60S subunit. Together these subunits are composed of 4 RNA species and approximately 80 structurally distinct proteins. This gene encodes a ribosomal protein that is a component of the 60S subunit. The protein, which shares sequence similarity with yeast ribosomal protein L44, belongs to the L44E (L36AE) family of ribosomal proteins. This gene and the human gene officially named ribosomal protein L36a (RPL36A) encode nearly

Nanjing BYabscience technology Co.,Ltd



identical proteins; however, they are distinct genes. Although the name of this gene has been referred to as ribosomal protein L36a (RPL36A), its official name is ribosomal protein L36a-like (RPL36AL). As is typical for genes encoding ribosomal proteins, there are multiple processed pseudogenes of this gene dispersed through the genome. [provided by RefSeq, Jul 20

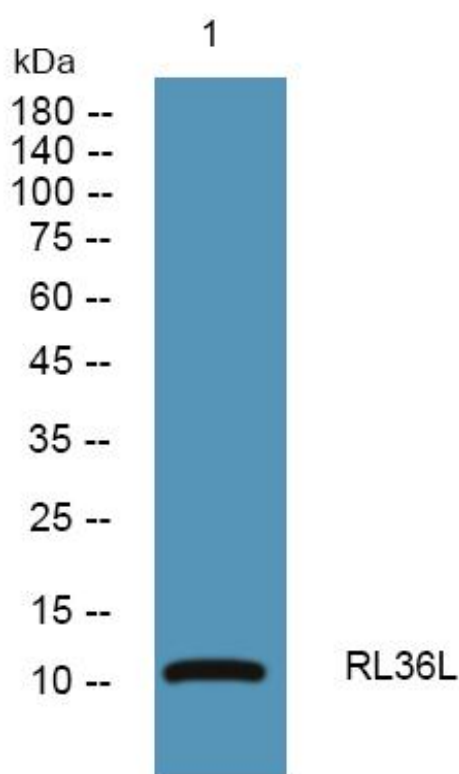
matters needing attention

Avoid repeated freezing and thawing!

Usage suggestions

This product can be used in immunological reaction related experiments. For more information, please consult technical personnel.

Products Images



Western Blot analysis of various cells using RL36L Monoclonal Antibody