



# RL29 Monoclonal Antibody

Catalog No	BYmab-05253
Isotype	IgG
Reactivity	Human;Mouse;Rat
Applications	WB
Gene Name	RPL29
Protein Name	60S ribosomal protein L29 (Cell surface heparin-binding protein HIP)
Immunogen	Synthesized peptide derived from human protein . at AA range: 40-120
Specificity	RL29 Monoclonal Antibody detects endogenous levels of protein.
Formulation	Liquid in PBS containing 50% glycerol, and 0.02% sodium azide.
Source	Monoclonal, Mouse,IgG
Purification	The antibody was affinity-purified from mouse antiserum by affinity-chromatography using epitope-specific immunogen.
Dilution	WB 1:500-2000
Concentration	1 mg/ml
Purity	≥90%
Storage Stability	-20°C/1 year
Synonyms	
Observed Band	17kD
Cell Pathway	cytosol,ribosome,cell-cell adherens junction,membrane,cytosolic large ribosomal subunit,
Tissue Specificity	Brain,Breast,Ovary,Pancreas,
Function	similarity:Belongs to the ribosomal protein L29e family.,
Background	<p>Ribosomes, the organelles that catalyze protein synthesis, consist of a small 40S subunit and a large 60S subunit. Together these subunits are composed of 4 RNA species and approximately 80 structurally distinct proteins. This gene encodes a cytoplasmic ribosomal protein that is a component of the 60S subunit. The protein belongs to the L29E family of ribosomal proteins. The protein is also a peripheral membrane protein expressed on the cell surface that directly binds heparin. Although this gene was previously reported to map to 3q29-qter, it is believed that it is located at 3p21.3-p21.2. As is typical for genes encoding ribosomal proteins, there are multiple processed pseudogenes of this gene dispersed through the</p>

Nanjing BYabscience technology Co.,Ltd



genome. [provided by RefSeq, Jul 2008],

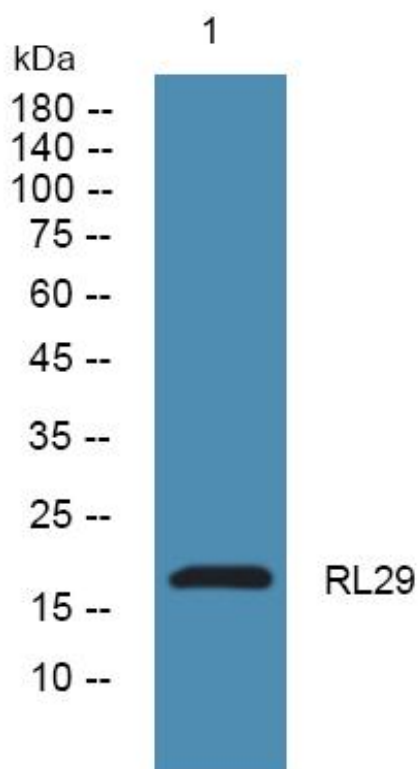
**matters needing attention**

Avoid repeated freezing and thawing!

**Usage suggestions**

This product can be used in immunological reaction related experiments. For more information, please consult technical personnel.

## Products Images



Western Blot analysis of various cells using RL29 Monoclonal Antibody