



# RLA0 Monoclonal Antibody

<b>Catalog No</b>	BYmab-05246
<b>Isotype</b>	IgG
<b>Reactivity</b>	Human;Mouse;Rat
<b>Applications</b>	WB
<b>Gene Name</b>	RPLP0
<b>Protein Name</b>	60S acidic ribosomal protein P0 (60S ribosomal protein L10E)
<b>Immunogen</b>	Synthesized peptide derived from human protein . at AA range: 240-320
<b>Specificity</b>	RLA0 Monoclonal Antibody detects endogenous levels of protein.
<b>Formulation</b>	Liquid in PBS containing 50% glycerol, and 0.02% sodium azide.
<b>Source</b>	Monoclonal, Mouse,IgG
<b>Purification</b>	The antibody was affinity-purified from mouse antiserum by affinity-chromatography using epitope-specific immunogen.
<b>Dilution</b>	WB 1:500-2000
<b>Concentration</b>	1 mg/ml
<b>Purity</b>	≥90%
<b>Storage Stability</b>	-20°C/1 year
<b>Synonyms</b>	
<b>Observed Band</b>	34kD
<b>Cell Pathway</b>	Nucleus . Cytoplasm . Localized in cytoplasmic mRNP granules containing untranslated mRNAs (PubMed:19188445, PubMed:17289661). .
<b>Tissue Specificity</b>	Adipose tissue,Brain,Cervix,Cervix carcinoma,Colon,Coronary
<b>Function</b>	function:Ribosomal protein P0 is the functional equivalent of E.coli protein L10.,similarity:Belongs to the ribosomal protein L10P family.,subunit:P0 forms a pentameric complex by interaction with dimers of P1 and P2.,subunit:P0 forms a pentameric complex by interaction with dimers of P1 and P2. Interacts with Lassa virus Z protein.,
<b>Background</b>	Ribosomes, the organelles that catalyze protein synthesis, consist of a small 40S subunit and a large 60S subunit. Together these subunits are composed of 4 RNA species and approximately 80 structurally distinct proteins. This gene encodes a ribosomal protein that is a component of the 60S subunit. The protein, which is the functional equivalent of the E. coli L10 ribosomal protein, belongs to the L10P family of ribosomal proteins. It is a neutral phosphoprotein with a C-terminal end

**Nanjing BYabscience technology Co.,Ltd**



that is nearly identical to the C-terminal ends of the acidic ribosomal phosphoproteins P1 and P2. The P0 protein can interact with P1 and P2 to form a pentameric complex consisting of P1 and P2 dimers, and a P0 monomer. The protein is located in the cytoplasm. Transcript variants derived from alternative splicing exist; they encode the same protein. As is typical for genes encoding ribosomal pro

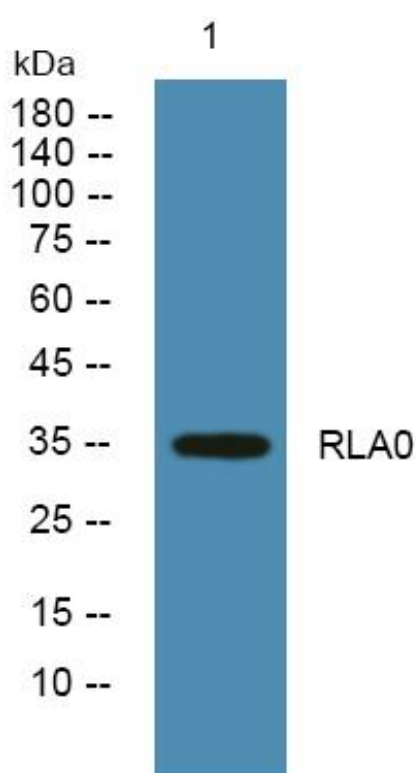
**matters needing attention**

Avoid repeated freezing and thawing!

**Usage suggestions**

This product can be used in immunological reaction related experiments. For more information, please consult technical personnel.

## Products Images



Western Blot analysis of various cells using RLA0 Monoclonal Antibody