



RS4Y2 Monoclonal Antibody

Catalog No	BYmab-05243
Isotype	IgG
Reactivity	Human;Rat;Mouse;
Applications	WB
Gene Name	RPS4Y2 RPS4Y2P
Protein Name	40S ribosomal protein S4, Y isoform 2
Immunogen	Synthesized peptide derived from human protein . at AA range: 50-130
Specificity	RS4Y2 Monoclonal Antibody detects endogenous levels of protein.
Formulation	Liquid in PBS containing 50% glycerol, and 0.02% sodium azide.
Source	Monoclonal, Mouse,IgG
Purification	The antibody was affinity-purified from mouse antiserum by affinity-chromatography using epitope-specific immunogen.
Dilution	WB 1:500-2000
Concentration	1 mg/ml
Purity	≥90%
Storage Stability	-20°C/1 year
Synonyms	
Observed Band	28kD
Cell Pathway	cytosolic small ribosomal subunit,
Tissue Specificity	
Function	miscellaneous:This isoform is encoded on the Y chromosome.,similarity:Belongs to the ribosomal protein S4e family.,similarity:Contains 1 S4 RNA-binding domain.,
Background	The protein encoded by this gene is a ribosomal protein that is highly similar to RPS4Y1. This gene is located in the male-specific region of the Y chromosome. [provided by RefSeq, Aug 2012],
matters needing attention	Avoid repeated freezing and thawing!

Nanjing BYabscience technology Co.,Ltd

网址: www.njbybio.com

官方热线: 025-5229-8998

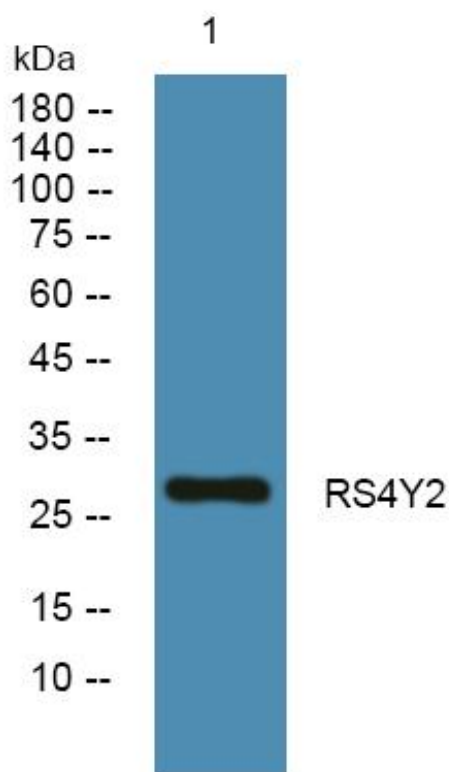
监督电话: 15950492658



Usage suggestions

This product can be used in immunological reaction related experiments. For more information, please consult technical personnel.

Products Images



Western Blot analysis of various cells using RS4Y2 Monoclonal Antibody

Nanjing BYabs science technology Co.,Ltd

网址: www.njbybio.com

官方热线: 025-5229-8998

监督电话: 15950492658