



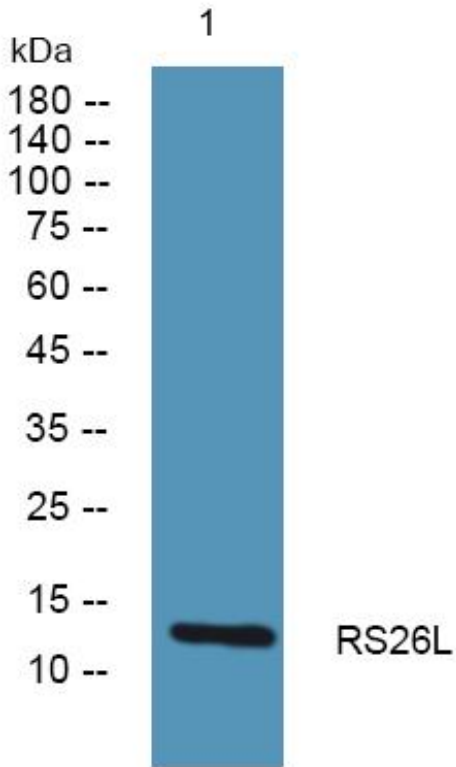
# RS26L Monoclonal Antibody

Catalog No	BYmab-05241
Isotype	IgG
Reactivity	Human;Rat;Mouse;
Applications	WB
Gene Name	RPS26P11 RPS26L1
Protein Name	Putative 40S ribosomal protein S26-like 1
Immunogen	Synthesized peptide derived from human protein . at AA range: 30-110
Specificity	RS26L Monoclonal Antibody detects endogenous levels of protein.
Formulation	Liquid in PBS containing 50% glycerol, and 0.02% sodium azide.
Source	Monoclonal, Mouse,IgG
Purification	The antibody was affinity-purified from mouse antiserum by affinity-chromatography using epitope-specific immunogen.
Dilution	WB 1:500-2000
Concentration	1 mg/ml
Purity	≥90%
Storage Stability	-20°C/1 year
Synonyms	
Observed Band	12kD
Cell Pathway	cytosolic small ribosomal subunit,
Tissue Specificity	
Function	caution:Could be the product of a pseudogene.,similarity:Belongs to the ribosomal protein S26e family.,
Background	caution:Could be the product of a pseudogene.,similarity:Belongs to the ribosomal protein S26e family.,
matters needing attention	Avoid repeated freezing and thawing!
Usage suggestions	This product can be used in immunological reaction related experiments. For more information, please consult technical personnel.

Nanjing BYabscience technology Co.,Ltd



## Products Images



Western Blot analysis of various cells using RS26L  
Monoclonal Antibody

Nanjing BYabs science technology Co.,Ltd

网址: [www.njbybio.com](http://www.njbybio.com)

官方热线: 025-5229-8998

监督电话: 15950492658