



# RM43 Monoclonal Antibody

Catalog No	BYmab-05232
Isotype	IgG
Reactivity	Human;Rat;Mouse;
Applications	WB
Gene Name	MRPL43
Protein Name	39S ribosomal protein L43, mitochondrial (L43mt) (MRP-L43) (Mitochondrial ribosomal protein bMRP36a)
Immunogen	Synthesized peptide derived from human protein . at AA range: 120-200
Specificity	RM43 Monoclonal Antibody detects endogenous levels of protein.
Formulation	Liquid in PBS containing 50% glycerol, and 0.02% sodium azide.
Source	Monoclonal, Mouse,IgG
Purification	The antibody was affinity-purified from mouse antiserum by affinity-chromatography using epitope-specific immunogen.
Dilution	WB 1:500-2000
Concentration	1 mg/ml
Purity	≥90%
Storage Stability	-20°C/1 year
Synonyms	
Observed Band	23kD
Cell Pathway	Mitochondrion .
Tissue Specificity	High relative levels in skeletal muscle and testis. Lower levels of expression in the heart, brain, placenta, lung, liver, kidney, pancreas, spleen, thymus, prostate, ovary, small intestine, colon and leukocytes. Expression is coregulated with TWNK.
Function	similarity:Belongs to the ribosomal protein S25/L51 family.,tissue specificity:High relative levels in skeletal muscle and testis. Lower levels of expression in the heart, brain, placenta, lung, liver, kidney, pancreas, spleen, thymus, prostate, ovary, small intestine, colon and leukocytes. Expression is coregulated with PEO1.,
Background	Mammalian mitochondrial ribosomal proteins are encoded by nuclear genes and help in protein synthesis within the mitochondrion. Mitochondrial ribosomes (mitoribosomes) consist of a small 28S subunit and a large 39S subunit. They have an estimated 75% protein to rRNA composition compared to prokaryotic

Nanjing BYabscience technology Co.,Ltd



ribosomes, where this ratio is reversed. Another difference between mammalian mitoribosomes and prokaryotic ribosomes is that the latter contain a 5S rRNA. Among different species, the proteins comprising the mitoribosome differ greatly in sequence, and sometimes in biochemical properties, which prevents easy recognition by sequence homology. This gene encodes a 39S subunit protein. This gene and the gene for a semaphorin class 4 protein (SEMA4G) overlap at map location 10q24.31 and are transcribed in opposite directions. Sequence analysis identified multiple transcript variants encodin

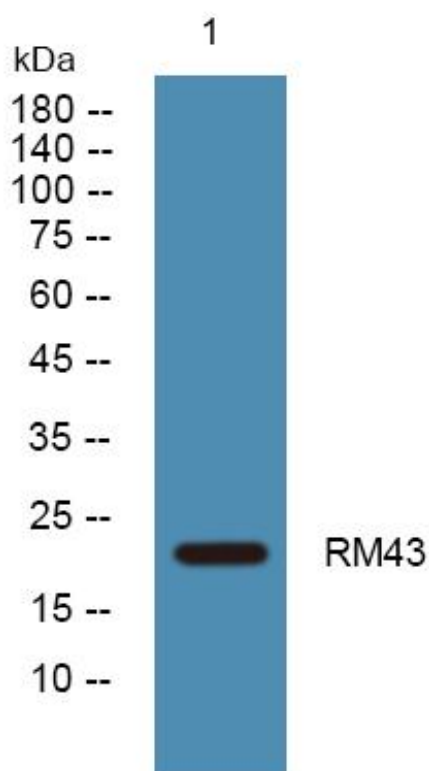
**matters needing attention**

Avoid repeated freezing and thawing!

**Usage suggestions**

This product can be used in immunological reaction related experiments. For more information, please consult technical personnel.

## Products Images



Western Blot analysis of various cells using RM43 Monoclonal Antibody