



# RT15 Monoclonal Antibody

Catalog No	BYmab-05218
Isotype	IgG
Reactivity	Human;Mouse
Applications	WB
Gene Name	MRPS15 RPMS15 DC37
Protein Name	28S ribosomal protein S15, mitochondrial (MRP-S15) (S15mt)
Immunogen	Synthesized peptide derived from human protein . at AA range: 80-160
Specificity	RT15 Monoclonal Antibody detects endogenous levels of protein.
Formulation	Liquid in PBS containing 50% glycerol, and 0.02% sodium azide.
Source	Monoclonal, Mouse,IgG
Purification	The antibody was affinity-purified from mouse antiserum by affinity-chromatography using epitope-specific immunogen.
Dilution	WB 1:500-2000
Concentration	1 mg/ml
Purity	≥90%
Storage Stability	-20°C/1 year
Synonyms	
Observed Band	28kD
Cell Pathway	Mitochondrion .
Tissue Specificity	Aorta endothelial cell,Dendritic cell,Skin,
Function	similarity:Belongs to the ribosomal protein S15P family.,subunit:Component of the mitochondrial ribosome small subunit (28S) which comprises a 12S rRNA and about 30 distinct proteins.,
Background	Mammalian mitochondrial ribosomal proteins are encoded by nuclear genes and help in protein synthesis within the mitochondrion. Mitochondrial ribosomes (mitoribosomes) consist of a small 28S subunit and a large 39S subunit. They have an estimated 75% protein to rRNA composition compared to prokaryotic ribosomes, where this ratio is reversed. Another difference between mammalian mitoribosomes and prokaryotic ribosomes is that the latter contain a 5S rRNA. Among different species, the proteins comprising the mitoribosome differ greatly in sequence, and sometimes in biochemical properties, which prevents easy

Nanjing BYabscience technology Co.,Ltd



recognition by sequence homology. This gene encodes a 28S subunit protein that belongs to the ribosomal protein S15P family. The encoded protein is more than two times the size of its E. coli counterpart, with the 12S rRNA binding sites conserved. Between human and mouse, the encod

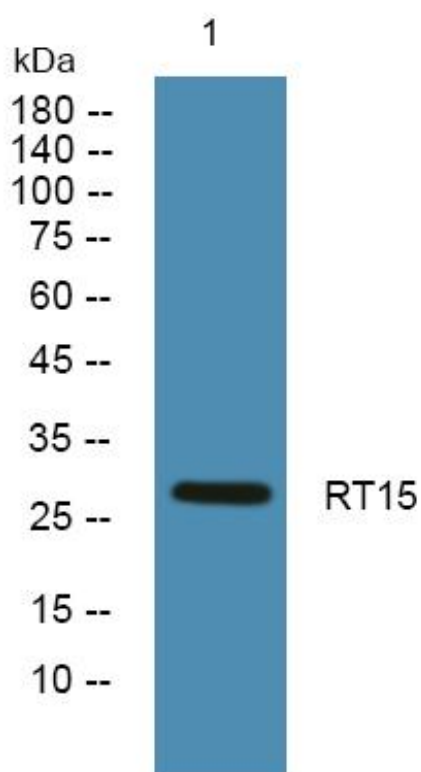
**matters needing attention**

Avoid repeated freezing and thawing!

**Usage suggestions**

This product can be used in immunological reaction related experiments. For more information, please consult technical personnel.

## Products Images



Western Blot analysis of various cells using RT15 Monoclonal Antibody