



# ACL6B Monoclonal Antibody

<b>Catalog No</b>	BYmab-05195
<b>Isotype</b>	IgG
<b>Reactivity</b>	Human;Mouse
<b>Applications</b>	WB
<b>Gene Name</b>	ACTL6B ACTL6 BAF53B
<b>Protein Name</b>	Actin-like protein 6B (53 kDa BRG1-associated factor B) (Actin-related protein Baf53b) (ArpNalpha) (BRG1-associated factor 53B) (BAF53B)
<b>Immunogen</b>	Synthesized peptide derived from human protein . at AA range: 1-80
<b>Specificity</b>	ACL6B Monoclonal Antibody detects endogenous levels of protein.
<b>Formulation</b>	Liquid in PBS containing 50% glycerol, and 0.02% sodium azide.
<b>Source</b>	Monoclonal, Mouse,IgG
<b>Purification</b>	The antibody was affinity-purified from mouse antiserum by affinity-chromatography using epitope-specific immunogen.
<b>Dilution</b>	WB 1:500-2000
<b>Concentration</b>	1 mg/ml
<b>Purity</b>	≥90%
<b>Storage Stability</b>	-20°C/1 year
<b>Synonyms</b>	
<b>Observed Band</b>	46kD
<b>Cell Pathway</b>	Nucleus .
<b>Tissue Specificity</b>	Brain,Cajal-Retzius cell,Fetal brain,
<b>Function</b>	function:Belongs to the chromatin remodeling brain-specific BAF (bBAF) complex, as such plays a role in remodeling mononucleosomes in an ATP-dependent fashion.,similarity:Belongs to the actin family.,subunit:Component of the bBAF complex, which includes at least actin (ACTB), ARID1A/BAF250, SMARCA2/BRM, SMARCA4/BRG1, SMARCB1/BAF47/SNF5/INI1, SMARCC1/BAF155, SMARCC2/BAF170, SMARCD2/BAF60B and SMARCE1/BAF57. Note that the bBAF complex is polymorphic in regard to the ATPase, SMARCA2 and SMARCA4 occupying mutually exclusive positions. PBRM1 does not belong to bBAF complex.,
<b>Background</b>	The protein encoded by this gene is a member of a family of actin-related proteins (ARPs) which share significant amino acid sequence identity to

**Nanjing BYabscience technology Co.,Ltd**



conventional actins. Both actins and ARPs have an actin fold, which is an ATP-binding cleft, as a common feature. The ARPs are involved in diverse cellular processes, including vesicular transport, spindle orientation, nuclear migration and chromatin remodeling. This gene encodes a subunit of the BAF (BRG1/brm-associated factor) complex in mammals, which is functionally related to SWI/SNF complex in *S. cerevisiae* and *Drosophila*; the latter is thought to facilitate transcriptional activation of specific genes by antagonizing chromatin-mediated transcriptional repression. This subunit may be involved in the regulation of genes by structural modulation of their chromatin, specifically in the brain. Alternative splicing results in multiple transcript variants. [provid

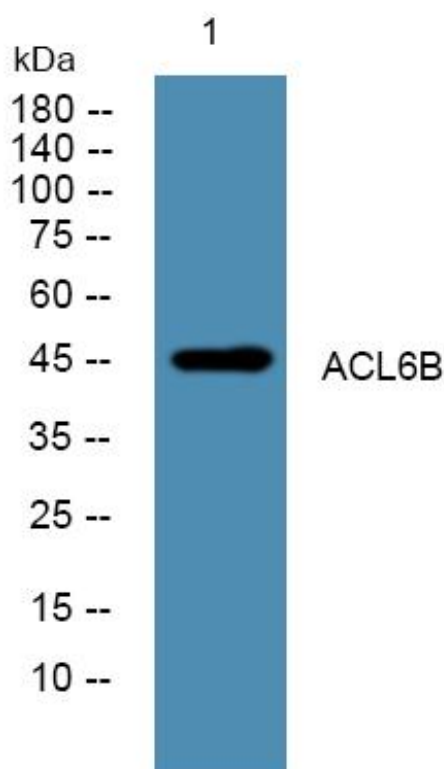
**matters needing attention**

Avoid repeated freezing and thawing!

**Usage suggestions**

This product can be used in immunological reaction related experiments. For more information, please consult technical personnel.

## Products Images



Western Blot analysis of various cells using ACL6B Monoclonal Antibody