



# HUS1B Monoclonal Antibody

Catalog No	BYmab-05186
Isotype	IgG
Reactivity	Human;Rat;Mouse;
Applications	WB
Gene Name	HUS1B
Protein Name	Checkpoint protein HUS1B (hHUS1B)
Immunogen	Synthesized peptide derived from human protein . at AA range: 160-240
Specificity	HUS1B Monoclonal Antibody detects endogenous levels of protein.
Formulation	Liquid in PBS containing 50% glycerol, and 0.02% sodium azide.
Source	Monoclonal, Mouse,IgG
Purification	The antibody was affinity-purified from mouse antiserum by affinity-chromatography using epitope-specific immunogen.
Dilution	WB 1:500-2000
Concentration	1 mg/ml
Purity	≥90%
Storage Stability	-20°C/1 year
Synonyms	
Observed Band	30kD
Cell Pathway	nucleolus,checkpoint clamp complex,site of double-strand break,
Tissue Specificity	Expressed strongly in testis, less in spleen, thymus, prostate, colon and leukocytes.
Function	similarity:Belongs to the HUS1 family.,subunit:Interacts with RAD1 and RAD9B.,tissue specificity:Expressed strongly in testis, less in spleen, thymus, prostate, colon and leukocytes.,
Background	The protein encoded by this gene is most closely related to HUS1, a component of a cell cycle checkpoint protein complex involved in cell cycle arrest in response to DNA damage. This protein can interact with the check point protein RAD1 but not with RAD9. Overexpression of this protein has been shown to induce cell death, which suggests a related but distinct role of this protein, as compared to the HUS1. [provided by RefSeq, Jul 2008],

Nanjing BYabscience technology Co.,Ltd

网址: [www.njbybio.com](http://www.njbybio.com)

官方热线: 025-5229-8998

监督电话: 15950492658



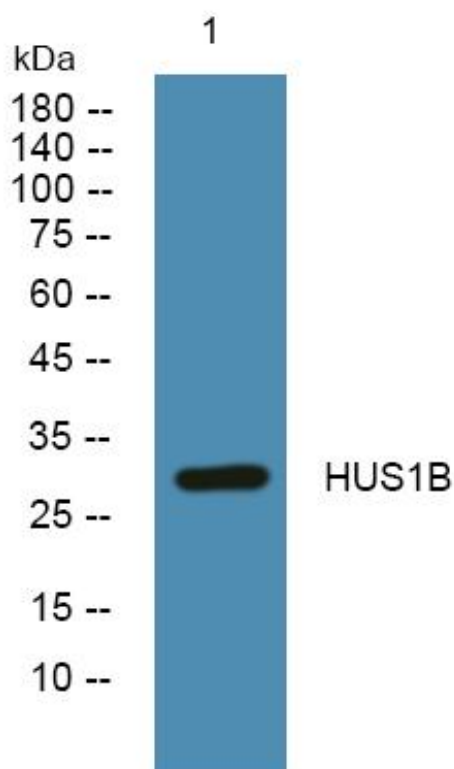
**matters needing attention**

Avoid repeated freezing and thawing!

**Usage suggestions**

This product can be used in immunological reaction related experiments. For more information, please consult technical personnel.

## Products Images



Western Blot analysis of various cells using HUS1B Monoclonal Antibody