



SERPH Monoclonal Antibody

| | |
|---------------------------|---|
| Catalog No | BYmab-05153 |
| Isotype | IgG |
| Reactivity | Human;Mouse;Rat |
| Applications | WB |
| Gene Name | SERPINH1 CBP1 CBP2 HSP47 SERPINH2 PIG14 |
| Protein Name | Serpin H1 (47 kDa heat shock protein) (Arsenic-transactivated protein 3) (AsTP3) (Cell proliferation-inducing gene 14 protein) (Collagen-binding protein) (Colligin) (Rheumatoid arthritis-related antigen) |
| Immunogen | Synthesized peptide derived from human protein . at AA range: 190-270 |
| Specificity | SERPH Monoclonal Antibody detects endogenous levels of protein. |
| Formulation | Liquid in PBS containing 50% glycerol, and 0.02% sodium azide. |
| Source | Monoclonal, Mouse,IgG |
| Purification | The antibody was affinity-purified from mouse antiserum by affinity-chromatography using epitope-specific immunogen. |
| Dilution | WB 1:500-2000 |
| Concentration | 1 mg/ml |
| Purity | ≥90% |
| Storage Stability | -20°C/1 year |
| Synonyms | |
| Observed Band | 45kD |
| Cell Pathway | Endoplasmic reticulum lumen. |
| Tissue Specificity | Brain, Cartilage, Fibroblast, Ovary, Periodontal ligament, Skin, |
| Function | function: Binds specifically to collagen. Could be involved as a chaperone in the biosynthetic pathway of collagen., induction: By heat shock., polymorphism: A functional SNP in the promoter of SERPINH1 is associated in African Americans with an increased risk for preterm premature rupture of membranes (PPROM) [MIM:610504]. PPRM is defined as rupture of the membranes before 37 weeks of gestation. SERPINH1 with the -656 T allele displays significantly reduced promoter activity compared to the major -656 C allele. Prematurity is correlated with an increased frequency of the -656 T allele., similarity: Belongs to the serpin family., |

Nanjing BYabscience technology Co.,Ltd

网址: www.njbybio.com

官方热线: 025-5229-8998

监督电话: 15950492658



Background

This gene encodes a member of the serpin superfamily of serine proteinase inhibitors. The encoded protein is localized to the endoplasmic reticulum and plays a role in collagen biosynthesis as a collagen-specific molecular chaperone. Autoantibodies to the encoded protein have been found in patients with rheumatoid arthritis. Expression of this gene may be a marker for cancer, and nucleotide polymorphisms in this gene may be associated with preterm birth caused by preterm premature rupture of membranes. Alternatively spliced transcript variants have been observed for this gene, and a pseudogene of this gene is located on the short arm of chromosome 9. [provided by RefSeq, May 2011],

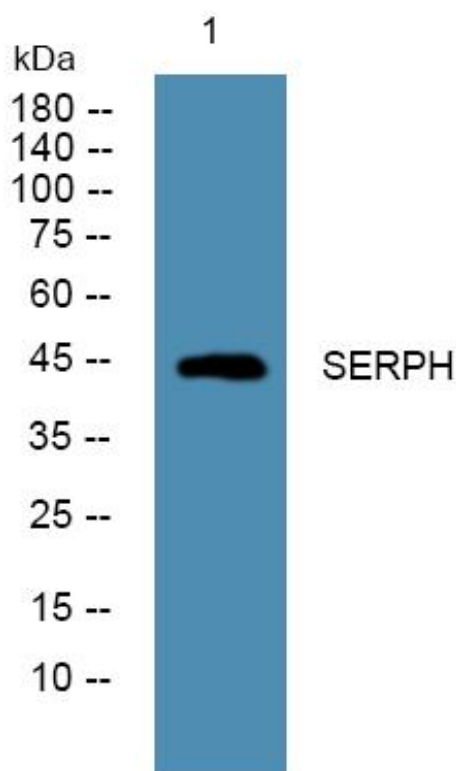
matters needing attention

Avoid repeated freezing and thawing!

Usage suggestions

This product can be used in immunological reaction related experiments. For more information, please consult technical personnel.

Products Images



Western Blot analysis of various cells using SERPH Monoclonal Antibody