



# MYL6B Monoclonal Antibody

Catalog No	BYmab-05140
Isotype	IgG
Reactivity	Human;Rat;Mouse;
Applications	WB
Gene Name	MYL6B MLC1SA
Protein Name	Myosin light chain 6B (Myosin light chain 1 slow-twitch muscle A isoform) (MLC1sa) (Smooth muscle and nonmuscle myosin light chain alkali 6B)
Immunogen	Synthesized peptide derived from human protein . at AA range: 10-90
Specificity	MYL6B Monoclonal Antibody detects endogenous levels of protein.
Formulation	Liquid in PBS containing 50% glycerol, and 0.02% sodium azide.
Source	Monoclonal, Mouse,IgG
Purification	The antibody was affinity-purified from mouse antiserum by affinity-chromatography using epitope-specific immunogen.
Dilution	WB 1:500-2000
Concentration	1 mg/ml
Purity	≥90%
Storage Stability	-20°C/1 year
Synonyms	
Observed Band	22kD
Cell Pathway	cytosol,muscle myosin complex,myosin complex,unconventional myosin complex,extracellular exosome,
Tissue Specificity	Brain,Ovary,Skeletal muscle,
Function	function:Regulatory light chain of myosin. Does not bind calcium.,similarity:Contains 3 EF-hand domains.,subunit:Myosin is an hexamer of 2 heavy chains and 4 light chains.,
Background	Myosin is a hexameric ATPase cellular motor protein. It is composed of two heavy chains, two nonphosphorylatable alkali light chains, and two phosphorylatable regulatory light chains. This gene encodes a myosin alkali light chain expressed in both slow-twitch skeletal muscle and in nonmuscle tissue. Alternative splicing results in multiple transcript variants. [provided by RefSeq, Dec 2010],

Nanjing BYabscience technology Co.,Ltd



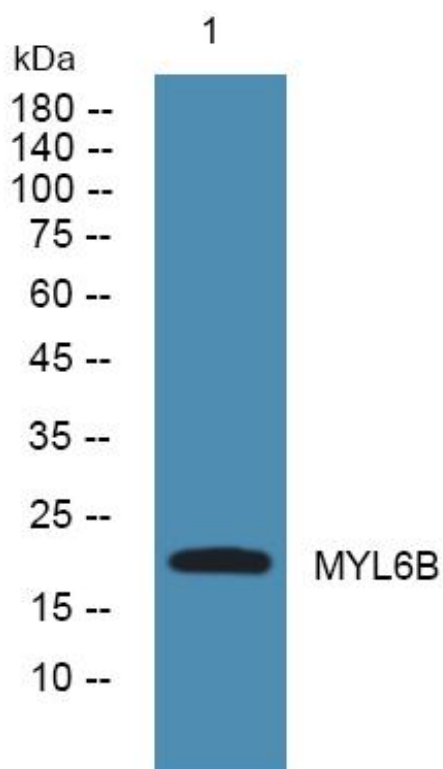
**matters needing attention**

Avoid repeated freezing and thawing!

**Usage suggestions**

This product can be used in immunological reaction related experiments. For more information, please consult technical personnel.

## Products Images



Western Blot analysis of various cells using MYL6B Monoclonal Antibody