



LTOR2 Monoclonal Antibody

Catalog No	BYmab-05136
Isotype	IgG
Reactivity	Human;Mouse
Applications	WB
Gene Name	LAMTOR2 MAPBPIP ROBLD3 HSPC003
Protein Name	Regulator complex protein LAMTOR2 (Endosomal adaptor protein p14) (Late endosomal/lysosomal Mp1-interacting protein) (Late endosomal/lysosomal adaptor and MAPK and MTOR activator 2) (Mitogen-activated
Immunogen	Synthesized peptide derived from human protein . at AA range: 10-90
Specificity	LTOR2 Monoclonal Antibody detects endogenous levels of protein.
Formulation	Liquid in PBS containing 50% glycerol, and 0.02% sodium azide.
Source	Monoclonal, Mouse,IgG
Purification	The antibody was affinity-purified from mouse antiserum by affinity-chromatography using epitope-specific immunogen.
Dilution	WB 1:500-2000
Concentration	1 mg/ml
Purity	≥90%
Storage Stability	-20°C/1 year
Synonyms	
Observed Band	13kD
Cell Pathway	Late endosome membrane ; Peripheral membrane protein ; Cytoplasmic side . Lysosome membrane ; Peripheral membrane protein ; Cytoplasmic side .
Tissue Specificity	Lung,Umbilical cord blood,
Function	disease:Defects in ROBLD3 are the cause of immunodeficiency due to defect in MAPBP-interacting protein [MIM:610798]. This form of primary immunodeficiency syndrome includes congenital neutropenia, partial albinism, short stature and B-cell and cytotoxic T-cell deficiency.,function:Adapter protein that enhances the efficiency of the MAP kinase cascade. Facilitates the activation of MAPK2.,online information:ROBLD3 mutation db,similarity:Belongs to the GAMAD family.,subunit:Heterodimer with MAP2K1IP1. Interacts with MAPK1 and MAP2K1.,
Background	The product of this gene is highly conserved with a mouse protein associated with the cytoplasmic face of late endosomes and lysosomes. The mouse protein

Nanjing BYabscience technology Co.,Ltd



interacts with MAPK scaffold protein 1, a component of the mitogen-activated protein kinase pathway. In humans, a mutation in this gene has been associated with a primary immunodeficiency syndrome, and suggests a role for this protein in endosomal biogenesis. Multiple transcript variants encoding different isoforms have been found for this gene. [provided by RefSeq, Feb 2009],

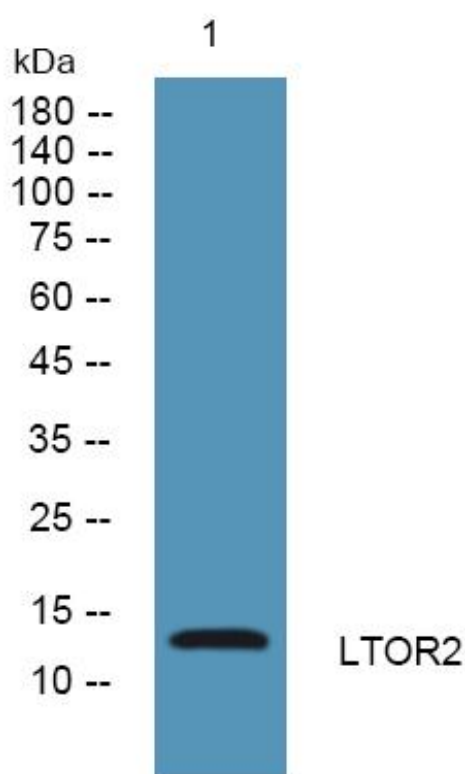
matters needing attention

Avoid repeated freezing and thawing!

Usage suggestions

This product can be used in immunological reaction related experiments. For more information, please consult technical personnel.

Products Images



Western Blot analysis of various cells using LTOR2 Monoclonal Antibody