



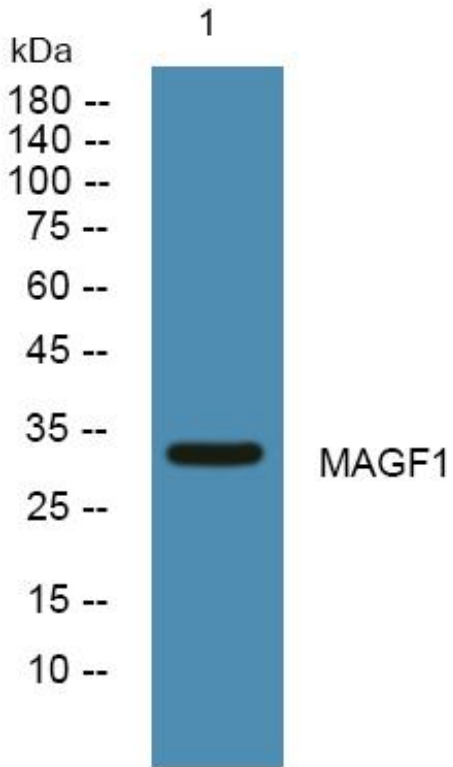
MAGF1 Monoclonal Antibody

Catalog No	BYmab-05135
Isotype	IgG
Reactivity	Human;Rat;Mouse;
Applications	WB
Gene Name	MAGEF1
Protein Name	Melanoma-associated antigen F1 (MAGE-F1 antigen)
Immunogen	Synthesized peptide derived from human protein . at AA range: 30-110
Specificity	MAGF1 Monoclonal Antibody detects endogenous levels of protein.
Formulation	Liquid in PBS containing 50% glycerol, and 0.02% sodium azide.
Source	Monoclonal, Mouse,IgG
Purification	The antibody was affinity-purified from mouse antiserum by affinity-chromatography using epitope-specific immunogen.
Dilution	WB 1:500-2000
Concentration	1 mg/ml
Purity	≥90%
Storage Stability	-20°C/1 year
Synonyms	
Observed Band	33kD
Cell Pathway	extracellular exosome,
Tissue Specificity	Ubiquitous.
Function	similarity:Contains 1 MAGE domain.,tissue specificity:Ubiquitous.,
Background	This intronless gene encodes a member of the MAGE superfamily. It is ubiquitously expressed in normal tissues and in tumor cells. This gene includes a microsatellite repeat in the coding region. [provided by RefSeq, Jul 2008],
matters needing attention	Avoid repeated freezing and thawing!
Usage suggestions	This product can be used in immunological reaction related experiments. For more information, please consult technical personnel.

Nanjing BYabscience technology Co.,Ltd



Products Images



Western Blot analysis of various cells using MAGF1
Monoclonal Antibody

Nanjing BYabs science technology Co.,Ltd

网址: www.njbybio.com

官方热线: 025-5229-8998

监督电话: 15950492658