



# K1H2 Monoclonal Antibody

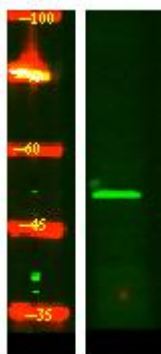
Catalog No	BYmab-05119
Isotype	IgG
Reactivity	Human;Rat;Mouse;
Applications	WB
Gene Name	KRT32 HHA2 HKA2 KRTHA2
Protein Name	Keratin, type I cuticular Ha2 (Hair keratin, type I Ha2) (Keratin-32) (K32)
Immunogen	Synthesized peptide derived from human protein . at AA range: 220-300
Specificity	K1H2 Monoclonal Antibody detects endogenous levels of protein.
Formulation	Liquid in PBS containing 50% glycerol, and 0.02% sodium azide.
Source	Monoclonal, Mouse,IgG
Purification	The antibody was affinity-purified from mouse antiserum by affinity-chromatography using epitope-specific immunogen.
Dilution	WB 1:500-2000
Concentration	1 mg/ml
Purity	≥90%
Storage Stability	-20°C/1 year
Synonyms	
Observed Band	49kD
Cell Pathway	intermediate filament,extracellular exosome,
Tissue Specificity	Restricted to the hair cuticle.
Function	miscellaneous:There are two types of hair/microfibrillar keratin, I (acidic) and II (neutral to basic).,similarity:Belongs to the intermediate filament family.,tissue specificity:Restricted to the hair cuticle.,
Background	The protein encoded by this gene is a member of the keratin gene family. As a type I hair keratin, it is an acidic protein which heterodimerizes with type II keratins to form hair and nails. The type I hair keratins are clustered in a region of chromosome 17q12-q21 and have the same direction of transcription. [provided by RefSeq, Jul 2008],
matters needing attention	Avoid repeated freezing and thawing!

Nanjing BYabscience technology Co.,Ltd

**Usage suggestions**

This product can be used in immunological reaction related experiments. For more information, please consult technical personnel.

## Products Images



Western Blot analysis of various cells using K1H2 Monoclonal Antibody