



# IL28B Monoclonal Antibody

<b>Catalog No</b>	BYmab-05103
<b>Isotype</b>	IgG
<b>Reactivity</b>	Human;Mouse
<b>Applications</b>	WB
<b>Gene Name</b>	IL28B IFNL3 IFNL4 IL28C ZCYTO22
<b>Protein Name</b>	Interleukin-28B (IL-28B) (Cytokine Zcyto22) (Interferon lambda-3) (IFN-lambda-3) (Interferon lambda-4) (IFN-lambda-4) (Interleukin-28C) (IL-28C)
<b>Immunogen</b>	Synthesized peptide derived from human protein . at AA range: 100-180
<b>Specificity</b>	IL28B Monoclonal Antibody detects endogenous levels of protein.
<b>Formulation</b>	Liquid in PBS containing 50% glycerol, and 0.02% sodium azide.
<b>Source</b>	Monoclonal, Mouse,IgG
<b>Purification</b>	The antibody was affinity-purified from mouse antiserum by affinity-chromatography using epitope-specific immunogen.
<b>Dilution</b>	WB 1:500-2000
<b>Concentration</b>	1 mg/ml
<b>Purity</b>	≥90%
<b>Storage Stability</b>	-20°C/1 year
<b>Synonyms</b>	
<b>Observed Band</b>	21kD
<b>Cell Pathway</b>	Secreted .
<b>Tissue Specificity</b>	Pooled,
<b>Function</b>	caution:It is uncertain whether Met-1 or Met-5 is the initiator.,function:Cytokine with immunomodulatory activity. Up-regulates MHC class I antigen expression. Displays potent antiviral activity. Also displays antitumor activity. Ligand for the heterodimeric class II cytokine receptor composed of IL10RB and IL28RA. The ligand/receptor complex seems to signal through the Jak-STAT pathway.,induction:By viral infections or double stranded RNA.,similarity:Belongs to the IL-28/IL-29 family.,
<b>Background</b>	This gene encodes a cytokine distantly related to type I interferons and the IL-10 family. This gene, interleukin 28A (IL28A), and interleukin 29 (IL29) are three closely related cytokine genes that form a cytokine gene cluster on a chromosomal region mapped to 19q13. Expression of the cytokines encoded by

**Nanjing BYabscience technology Co.,Ltd**



the three genes can be induced by viral infection. All three cytokines have been shown to interact with a heterodimeric class II cytokine receptor that consists of interleukin 10 receptor, beta (IL10RB) and interleukin 28 receptor, alpha (IL28RA). [provided by RefSeq, Jul 2008],

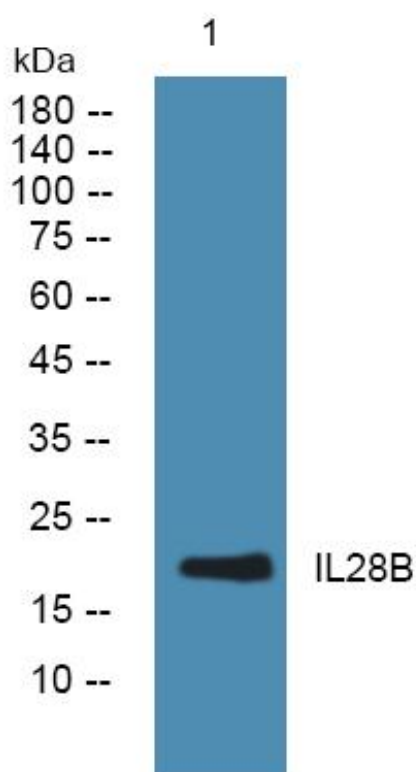
**matters needing attention**

Avoid repeated freezing and thawing!

**Usage suggestions**

This product can be used in immunological reaction related experiments. For more information, please consult technical personnel.

## Products Images



Western Blot analysis of various cells using IL28B Monoclonal Antibody