



IGFL3 Monoclonal Antibody

| | |
|---------------------------|---|
| Catalog No | BYmab-05101 |
| Isotype | IgG |
| Reactivity | Human;Rat;Mouse; |
| Applications | WB |
| Gene Name | IGFL3 UNQ483/PRO982 |
| Protein Name | Insulin growth factor-like family member 3 |
| Immunogen | Synthesized peptide derived from human protein . at AA range: 10-90 |
| Specificity | IGFL3 Monoclonal Antibody detects endogenous levels of protein. |
| Formulation | Liquid in PBS containing 50% glycerol, and 0.02% sodium azide. |
| Source | Monoclonal, Mouse,IgG |
| Purification | The antibody was affinity-purified from mouse antiserum by affinity-chromatography using epitope-specific immunogen. |
| Dilution | WB 1:500-2000 |
| Concentration | 1 mg/ml |
| Purity | ≥90% |
| Storage Stability | -20°C/1 year |
| Synonyms | |
| Observed Band | 13kD |
| Cell Pathway | Secreted . |
| Tissue Specificity | Detected in the cerebellum. |
| Function | similarity:Belongs to the IGFL family., |
| Background | IGF like family member 3(IGFL3) Homo sapiens IGFL3 belongs to the insulin-like growth factor (IGF; see MIM 147440) family of signaling molecules that play critical roles in cellular energy metabolism and in growth and development, especially prenatal growth (Emtage et al., 2006 [PubMed 16890402]).[supplied by OMIM, Mar 2008], |
| matters needing attention | Avoid repeated freezing and thawing! |

Nanjing BYabscience technology Co.,Ltd

网址: www.njbybio.com

官方热线: 025-5229-8998

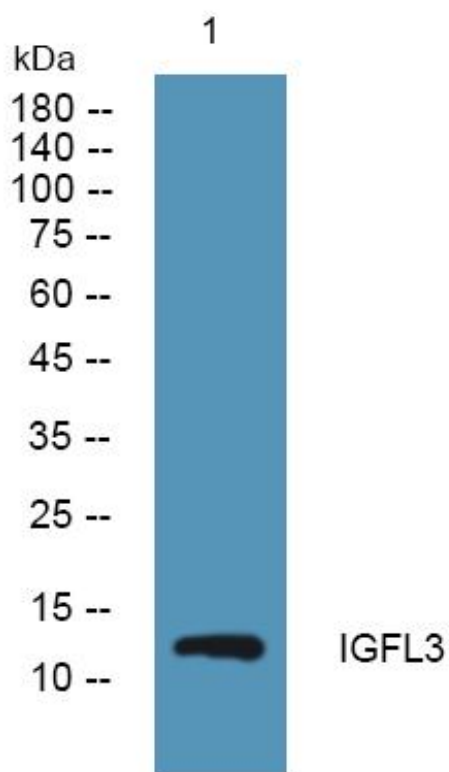
监督电话: 15950492658



Usage suggestions

This product can be used in immunological reaction related experiments. For more information, please consult technical personnel.

Products Images



Western Blot analysis of various cells using IGFL3 Monoclonal Antibody

Nanjing BYabscience technology Co.,Ltd

网址: www.njbybio.com

官方热线: 025-5229-8998

监督电话: 15950492658