



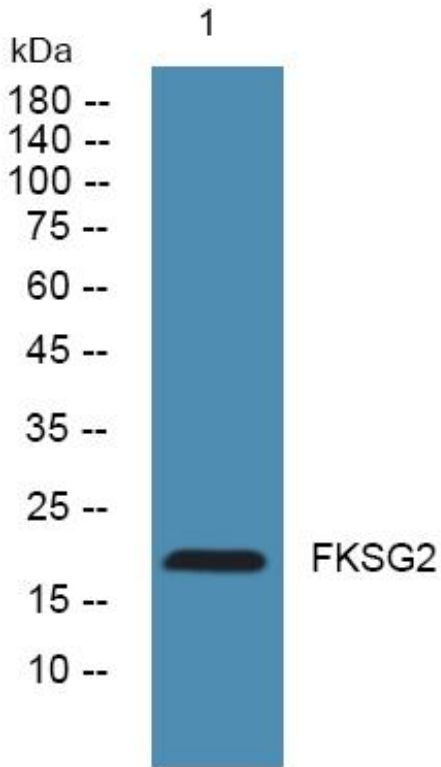
FKSG2 Monoclonal Antibody

Catalog No	BYmab-05075
Isotype	IgG
Reactivity	Human;Rat;Mouse;
Applications	WB
Gene Name	FKSG2
Protein Name	Putative apoptosis inhibitor FKSG2
Immunogen	Synthesized peptide derived from human protein . at AA range: 40-120
Specificity	FKSG2 Monoclonal Antibody detects endogenous levels of protein.
Formulation	Liquid in PBS containing 50% glycerol, and 0.02% sodium azide.
Source	Monoclonal, Mouse,IgG
Purification	The antibody was affinity-purified from mouse antiserum by affinity-chromatography using epitope-specific immunogen.
Dilution	WB 1:500-2000
Concentration	1 mg/ml
Purity	≥90%
Storage Stability	-20°C/1 year
Synonyms	
Observed Band	19kD
Cell Pathway	cytoplasm,
Tissue Specificity	
Function	caution:Could be the product of a pseudogene.,similarity:Belongs to the TCTP family.,
Background	caution:Could be the product of a pseudogene.,similarity:Belongs to the TCTP family.,
matters needing attention	Avoid repeated freezing and thawing!
Usage suggestions	This product can be used in immunological reaction related experiments. For more information, please consult technical personnel.

Nanjing BYabscience technology Co.,Ltd



Products Images



Western Blot analysis of various cells using FKSG2
Monoclonal Antibody

Nanjing BYabs science technology Co.,Ltd

网址: www.njbybio.com

官方热线: 025-5229-8998

监督电话: 15950492658