



CALY Monoclonal Antibody

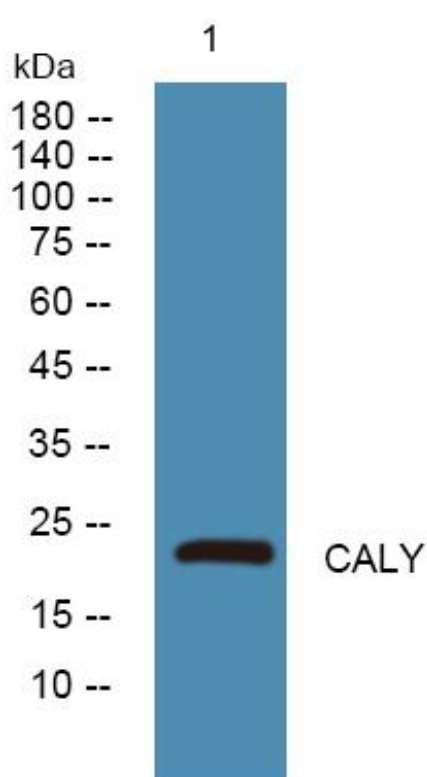
Catalog No	BYmab-05067
Isotype	IgG
Reactivity	Human;Rat;Mouse;
Applications	WB
Gene Name	CALY DRD1IP
Protein Name	Neuron-specific vesicular protein calcyon
Immunogen	Synthesized peptide derived from human protein . at AA range: 1-80
Specificity	CALY Monoclonal Antibody detects endogenous levels of protein.
Formulation	Liquid in PBS containing 50% glycerol, and 0.02% sodium azide.
Source	Monoclonal, Mouse,IgG
Purification	The antibody was affinity-purified from mouse antiserum by affinity-chromatography using epitope-specific immunogen.
Dilution	WB 1:500-2000
Concentration	1 mg/ml
Purity	≥90%
Storage Stability	-20°C/1 year
Synonyms	
Observed Band	23kD
Cell Pathway	Cytoplasmic vesicle membrane; Single-pass membrane protein. Cell membrane; Single-pass membrane protein.
Tissue Specificity	Expressed in the pyramidal cells of the prefrontal cortex, in hippocampus and in caudate nucleus. No expression in spleen. Up-regulated in the prefrontal cortex of schizophrenic patients with nearly twice the levels of non-schizophrenics.
Function	caution:Was originally (PubMed:10698743) thought to interact with the D1 dopamine receptor (DRD1) and to play a role in potentiating calcium ion-dependent signaling but this work was later retracted.,function:Interacts with clathrin light chain A and stimulates clathrin self-assembly and clathrin-mediated endocytosis.,PTM:Glycosylated.,similarity:Belongs to the NSG family.,subunit:Interacts with CLTA.,tissue specificity:Expressed in the pyramidal cells of the prefrontal cortex, in hippocampus and in caudate nucleus. No expression in spleen. Up-regulated in the prefrontal cortex of schizophrenic patients with nearly twice the levels of non-schizophrenics.,

Nanjing BYabscience technology Co.,Ltd



Background	calcyon neuron specific vesicular protein(CALY) Homo sapiens The protein encoded by this gene is a type II single transmembrane protein. It is required for maximal stimulated calcium release after stimulation of purinergic or muscarinic but not beta-adrenergic receptors. The encoded protein interacts with D1 dopamine receptor and may interact with other DA receptor subtypes and/or GPCRs. [provided by RefSeq, Jul 2008],
matters needing attention	Avoid repeated freezing and thawing!
Usage suggestions	This product can be used in immunological reaction related experiments. For more information, please consult technical personnel.

Products Images



Western Blot analysis of various cells using CALY Monoclonal Antibody