



CRLF3 Monoclonal Antibody

Catalog No	BYmab-05062
Isotype	IgG
Reactivity	Human;Mouse
Applications	WB
Gene Name	CRLF3 CREME9 CYTOR4 P48
Protein Name	Cytokine receptor-like factor 3 (Cytokine receptor-like molecule 9) (CREME-9) (Cytokine receptor-related protein 4) (Type I cytokine receptor-like factor p48)
Immunogen	Synthesized peptide derived from human protein . at AA range: 270-350
Specificity	CRLF3 Monoclonal Antibody detects endogenous levels of protein.
Formulation	Liquid in PBS containing 50% glycerol, and 0.02% sodium azide.
Source	Monoclonal, Mouse,IgG
Purification	The antibody was affinity-purified from mouse antiserum by affinity-chromatography using epitope-specific immunogen.
Dilution	WB 1:500-2000
Concentration	1 mg/ml
Purity	≥90%
Storage Stability	-20°C/1 year
Synonyms	
Observed Band	48kD
Cell Pathway	Cytoplasm . The EGFP- and MYC-tagged protein has been shown to be cytoplasmic. .
Tissue Specificity	Expressed in several embryonic and adult tissues, including adult and fetal brain, liver, spleen and pancreas. Expressed in adult, but not fetal kidney. Expressed in skin and squamous cell carcinoma (SCC) and in several other cancer types. Also detected in lesion actinic keratosis (AK).
Function	similarity:Belongs to the cytokine receptor-like factor 3 family.,similarity:Contains 1 fibronectin type-III domain.,tissue specificity:Expressed in skin and squamous cell carcinoma (SCC) and in lesion actinic keratosis (AK).,
Background	This gene encodes a cytokine receptor-like factor that may negatively regulate cell cycle progression at the G0/G1 phase. Studies of the related rat protein suggest that it may regulate neuronal morphology and synaptic vesicle biogenesis. This gene is one of several genes located in the neurofibromatosis type I tumor suppressor region on the q arm of chromosome 17, a region that is subject to microdeletions, duplications, chromosomal breaks and rearrangements.

Nanjing BYabscience technology Co.,Ltd



Alternative splicing of this gene results in multiple transcript variants. Related pseudogenes have been identified on chromosomes 2 and 5. [provided by RefSeq, Aug 2012],

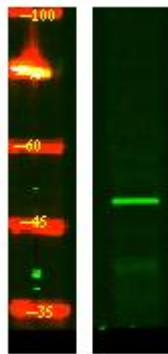
matters needing attention

Avoid repeated freezing and thawing!

Usage suggestions

This product can be used in immunological reaction related experiments. For more information, please consult technical personnel.

Products Images



Western Blot analysis of various cells using CRLF3 Monoclonal Antibody