



C27C1 Monoclonal Antibody

Catalog No	BYmab-05054
Isotype	IgG
Reactivity	Human;Rat;Mouse;
Applications	WB
Gene Name	CYP27C1
Protein Name	Cytochrome P450 27C1 (EC 1.14.-.-)
Immunogen	Synthesized peptide derived from human protein . at AA range: 80-160
Specificity	C27C1 Monoclonal Antibody detects endogenous levels of protein.
Formulation	Liquid in PBS containing 50% glycerol, and 0.02% sodium azide.
Source	Monoclonal, Mouse,IgG
Purification	The antibody was affinity-purified from mouse antiserum by affinity-chromatography using epitope-specific immunogen.
Dilution	WB 1:500-2000
Concentration	1 mg/ml
Purity	≥90%
Storage Stability	-20°C/1 year
Synonyms	
Observed Band	40kD
Cell Pathway	[Isoform 2]: Mitochondrion membrane ; Peripheral membrane protein .
Tissue Specificity	Widely expressed, with highest levels in the liver, kidney and pancreas. ; [Isoform 2]: Expressed in the skin (at protein level).
Function	cofactor:Heme group.,similarity:Belongs to the cytochrome P450 family.,
Background	cytochrome P450 family 27 subfamily C member 1(CYP27C1) Homo sapiens This gene encodes a member of the cytochrome P450 superfamily of enzymes. The cytochrome P450 proteins are monooxygenases which catalyze many reactions involved in drug metabolism and synthesis of cholesterol, steroids and other lipids. [provided by RefSeq, Jul 2008],
matters needing attention	Avoid repeated freezing and thawing!

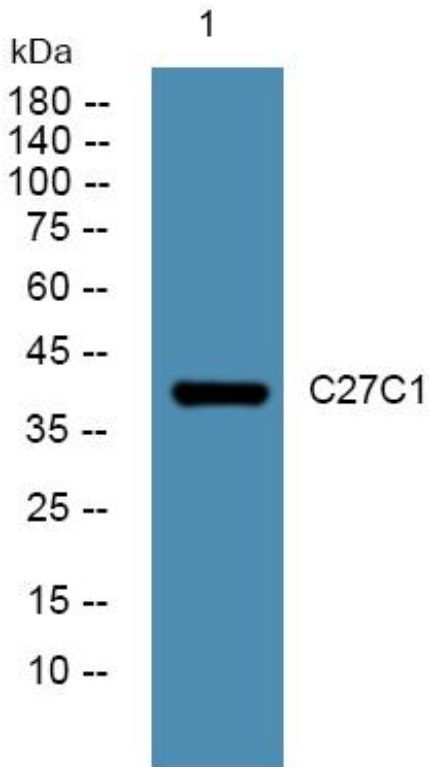
Nanjing BYabscience technology Co.,Ltd



Usage suggestions

This product can be used in immunological reaction related experiments. For more information, please consult technical personnel.

Products Images



Western Blot analysis of various cells using C27C1 Monoclonal Antibody

Nanjing BYabs science technology Co.,Ltd

网址: www.njbybio.com

官方热线: 025-5229-8998

监督电话: 15950492658