



F215A Monoclonal Antibody

Catalog No	BYmab-05049
Isotype	IgG
Reactivity	Human;Rat;Mouse;
Applications	WB
Gene Name	FAM215A APR2 C17orf88
Protein Name	Putative protein FAM215A (Putative apoptosis-related protein 2) (APR-2)
Immunogen	Synthesized peptide derived from human protein . at AA range: 30-110
Specificity	F215A Monoclonal Antibody detects endogenous levels of protein.
Formulation	Liquid in PBS containing 50% glycerol, and 0.02% sodium azide.
Source	Monoclonal, Mouse,IgG
Purification	The antibody was affinity-purified from mouse antiserum by affinity-chromatography using epitope-specific immunogen.
Dilution	WB 1:500-2000
Concentration	1 mg/ml
Purity	≥90%
Storage Stability	-20°C/1 year
Synonyms	
Observed Band	12kD
Cell Pathway	
Tissue Specificity	
Function	apoptosis, cell death, programmed cell death, death,
Background	FAM215A (Family With Sequence Similarity 215 Member A (Non-Protein Coding)) is an RNA Gene, and is affiliated with the non-coding RNA class. It is a Mouse Monoclonal antibody to 6D11 to C17orf88, APR-2, FAM215A, family with sequence similarity 215, member A (non-protein coding), LINC00530. This antibody recognizes Human antigen.
matters needing attention	Avoid repeated freezing and thawing!

Nanjing BYabscience technology Co.,Ltd

网址: www.njbybio.com

官方热线: 025-5229-8998

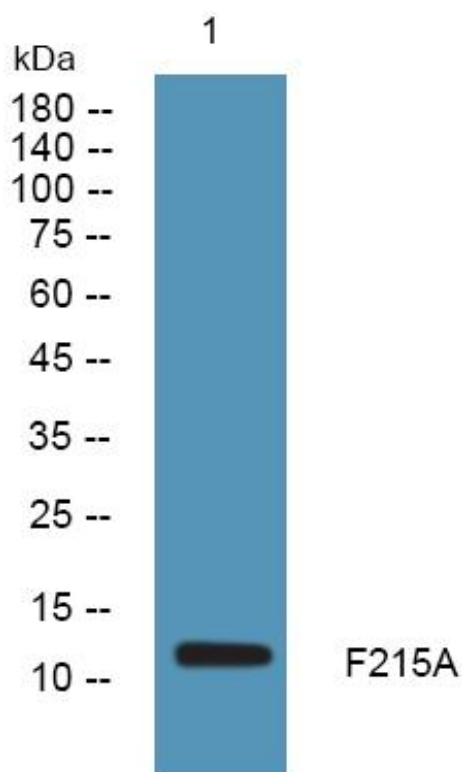
监督电话: 15950492658



Usage suggestions

This product can be used in immunological reaction related experiments. For more information, please consult technical personnel.

Products Images



Western Blot analysis of various cells using F215A Monoclonal Antibody

Nanjing BYabscience technology Co.,Ltd

网址: www.njbybio.com

官方热线: 025-5229-8998

监督电话: 15950492658