



CDK3 Monoclonal Antibody

| | |
|---------------------------|---|
| Catalog No | BYmab-05047 |
| Isotype | IgG |
| Reactivity | Human;Mouse |
| Applications | WB |
| Gene Name | CDK3 CDKN3 |
| Protein Name | Cyclin-dependent kinase 3 (EC 2.7.11.22) (Cell division protein kinase 3) |
| Immunogen | Synthesized peptide derived from human protein . at AA range: 10-90 |
| Specificity | CDK3 Monoclonal Antibody detects endogenous levels of protein. |
| Formulation | Liquid in PBS containing 50% glycerol, and 0.02% sodium azide. |
| Source | Monoclonal, Mouse,IgG |
| Purification | The antibody was affinity-purified from mouse antiserum by affinity-chromatography using epitope-specific immunogen. |
| Dilution | WB 1:500-2000 |
| Concentration | 1 mg/ml |
| Purity | ≥90% |
| Storage Stability | -20°C/1 year |
| Synonyms | |
| Observed Band | 33kD |
| Cell Pathway | |
| Tissue Specificity | Expressed in cancer cell lines and glioblastoma tissue. |
| Function | catalytic activity:ATP + a protein = ADP + a phosphoprotein.,function:Probably involved in the control of the cell cycle. Interacts with a yet unknown type of cyclin. Can phosphorylate histone H1.,similarity:Belongs to the protein kinase superfamily. CMGC Ser/Thr protein kinase family. CDC2/CDKX subfamily.,similarity:Contains 1 protein kinase domain.,subunit:Interacts with CABLES1., |
| Background | cyclin dependent kinase 3(CDK3) Homo sapiens This gene encodes a member of the cyclin-dependent protein kinase family. The protein promotes entry into S phase, in part by activating members of the E2F family of transcription factors. The protein also associates with cyclin C and phosphorylates the retinoblastoma 1 protein to promote exit from G0. [provided by RefSeq, Jul 2008], |

Nanjing BYabscience technology Co.,Ltd



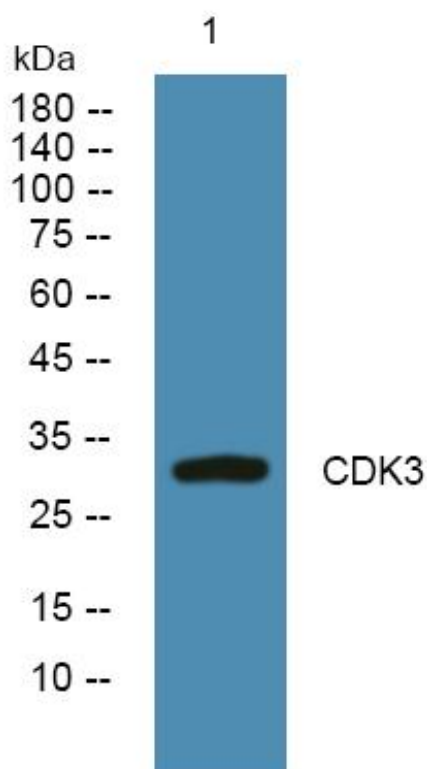
matters needing attention

Avoid repeated freezing and thawing!

Usage suggestions

This product can be used in immunological reaction related experiments. For more information, please consult technical personnel.

Products Images



Western Blot analysis of various cells using CDK3 Monoclonal Antibody