



BARH2 Monoclonal Antibody

Catalog No	BYmab-05027
Isotype	IgG
Reactivity	Human;Mouse;Rat
Applications	WB
Gene Name	BARHL2
Protein Name	BarH-like 2 homeobox protein
Immunogen	Synthesized peptide derived from human protein . at AA range: 140-220
Specificity	BARH2 Monoclonal Antibody detects endogenous levels of protein.
Formulation	Liquid in PBS containing 50% glycerol, and 0.02% sodium azide.
Source	Monoclonal, Mouse,IgG
Purification	The antibody was affinity-purified from mouse antiserum by affinity-chromatography using epitope-specific immunogen.
Dilution	WB 1:500-2000
Concentration	1 mg/ml
Purity	≥90%
Storage Stability	-20°C/1 year
Synonyms	
Observed Band	42kD
Cell Pathway	Nucleus .
Tissue Specificity	
Function	function:Potential regulator of neural basic helix-loop-helix genes.,similarity:Belongs to the BAR homeobox family.,similarity:Contains 1 homeobox DNA-binding domain.,
Background	function:Potential regulator of neural basic helix-loop-helix genes.,similarity:Belongs to the BAR homeobox family.,similarity:Contains 1 homeobox DNA-binding domain.,
matters needing attention	Avoid repeated freezing and thawing!

Nanjing BYabscience technology Co.,Ltd

网址: www.njbybio.com

官方热线: 025-5229-8998

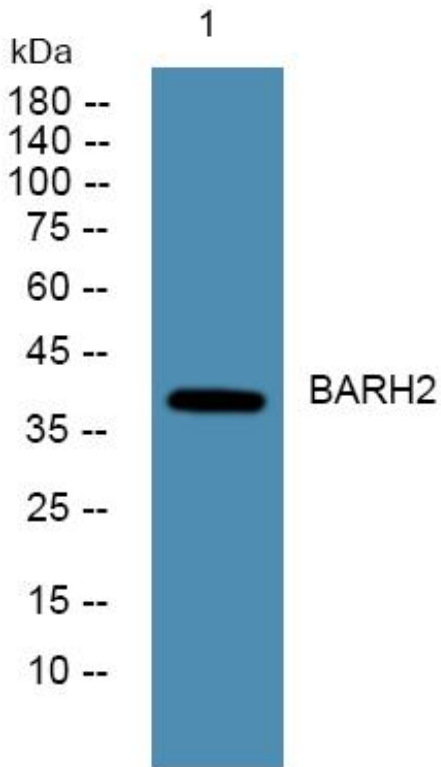
监督电话: 15950492658



Usage suggestions

This product can be used in immunological reaction related experiments. For more information, please consult technical personnel.

Products Images



Western Blot analysis of various cells using BARH2 Monoclonal Antibody

Nanjing BYabs science technology Co.,Ltd

网址: www.njbybio.com

官方热线: 025-5229-8998

监督电话: 15950492658