



CBX8 Monoclonal Antibody

Catalog No	BYmab-05023
Isotype	IgG
Reactivity	Human;Mouse
Applications	WB
Gene Name	CBX8 PC3 RC1
Protein Name	Chromobox protein homolog 8 (Polycomb 3 homolog) (Pc3) (hPc3) (Rectachrome 1)
Immunogen	Synthesized peptide derived from human protein . at AA range: 140-220
Specificity	CBX8 Monoclonal Antibody detects endogenous levels of protein.
Formulation	Liquid in PBS containing 50% glycerol, and 0.02% sodium azide.
Source	Monoclonal, Mouse,IgG
Purification	The antibody was affinity-purified from mouse antiserum by affinity-chromatography using epitope-specific immunogen.
Dilution	WB 1:500-2000
Concentration	1 mg/ml
Purity	≥90%
Storage Stability	-20°C/1 year
Synonyms	
Observed Band	42kD
Cell Pathway	Nucleus .
Tissue Specificity	Colon carcinoma,Embryo,Lung,Muscle,
Function	function:Component of the Polycomb group (PcG) multiprotein PRC1 complex, a complex required to maintain the transcriptionally repressive state of many genes, including Hox genes, throughout development. PcG PRC1 complex acts via chromatin remodeling and modification of histones; it mediates monoubiquitination of histone H2A 'Lys-119', rendering chromatin heritably changed in its expressibility.,similarity:Contains 1 chromo domain.,subunit:Component of chromatin-associated class II polycomb repressive complex 1 (PRC1/hPRC-H) at least composed of PCGF2/RNF110, BMI1/PCGF4, CBX2/M33, CBX4/PC2, CBX8/PC3, PHC1, PHC2, PHC3, SCM1, RING1 and RNF2/RING2. Interacts with MLLT3.,

Nanjing BYabscience technology Co.,Ltd

网址: www.njbybio.com

官方热线: 025-5229-8998

监督电话: 15950492658



Background

function: Component of the Polycomb group (PcG) multiprotein PRC1 complex, a complex required to maintain the transcriptionally repressive state of many genes, including Hox genes, throughout development. PcG PRC1 complex acts via chromatin remodeling and modification of histones; it mediates monoubiquitination of histone H2A 'Lys-119', rendering chromatin heritably changed in its expressibility. similarity: Contains 1 chromo domain. subunit: Component of chromatin-associated class II polycomb repressive complex 1 (PRC1/hPRC-H) at least composed of PCGF2/RNF110, BMI1/PCGF4, CBX2/M33, CBX4/PC2, CBX8/PC3, PHC1, PHC2, PHC3, SCMH1, RING1 and RNF2/RING2. Interacts with MLLT3. ,

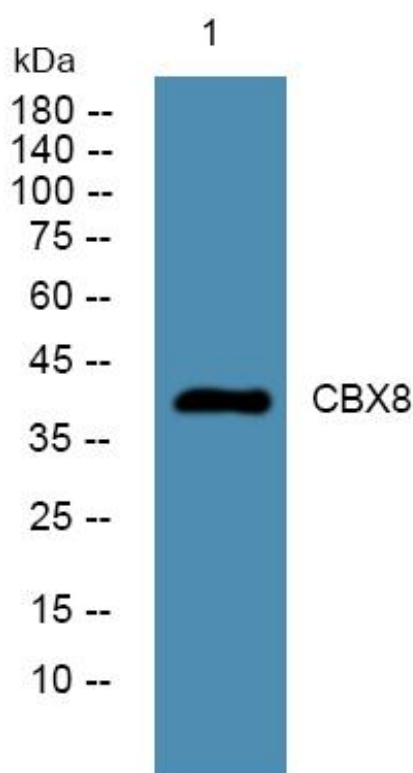
matters needing attention

Avoid repeated freezing and thawing!

Usage suggestions

This product can be used in immunological reaction related experiments. For more information, please consult technical personnel.

Products Images



Western Blot analysis of various cells using CBX8 Monoclonal Antibody