



# CT47A Monoclonal Antibody

<b>Catalog No</b>	BYmab-05000
<b>Isotype</b>	IgG
<b>Reactivity</b>	Human;Rat;Mouse;
<b>Applications</b>	WB
<b>Gene Name</b>	CT47A1 CT47.1; CT47A2 CT47.2; CT47A3 CT47.3; CT47A4 CT47.4; CT47A5 CT47.5; CT47A6 CT47.6; CT47A7 CT47.7; CT47A8 CT47.8; CT47A9 CT47.9; CT47A10 CT47.10; CT47A11 CT47.11; CT47A12 CT47.12
<b>Protein Name</b>	Cancer/testis antigen 47A (Cancer/testis antigen 47) (CT47)
<b>Immunogen</b>	Synthesized peptide derived from human protein . at AA range: 210-290
<b>Specificity</b>	CT47A Monoclonal Antibody detects endogenous levels of protein.
<b>Formulation</b>	Liquid in PBS containing 50% glycerol, and 0.02% sodium azide.
<b>Source</b>	Monoclonal, Mouse,IgG
<b>Purification</b>	The antibody was affinity-purified from mouse antiserum by affinity-chromatography using epitope-specific immunogen.
<b>Dilution</b>	WB 1:500-2000
<b>Concentration</b>	1 mg/ml
<b>Purity</b>	≥90%
<b>Storage Stability</b>	-20°C/1 year
<b>Synonyms</b>	
<b>Observed Band</b>	31kD
<b>Cell Pathway</b>	
<b>Tissue Specificity</b>	Strongly expressed in testis, low expression in placenta, and very low expression in brain.
<b>Function</b>	tissue specificity:Strongly expressed in testis, low expression in placenta, and very low expression in brain.,
<b>Background</b>	This locus represents a member of the cancer/testis gene family 47. This family, also known as CT47, is comprised of 13 nearly identical loci clustered at Xq24. [provided by RefSeq, Sep 2010],
<b>matters needing attention</b>	Avoid repeated freezing and thawing!

**Nanjing BYabscience technology Co.,Ltd**

网址: [www.njbybio.com](http://www.njbybio.com)

官方热线: 025-5229-8998

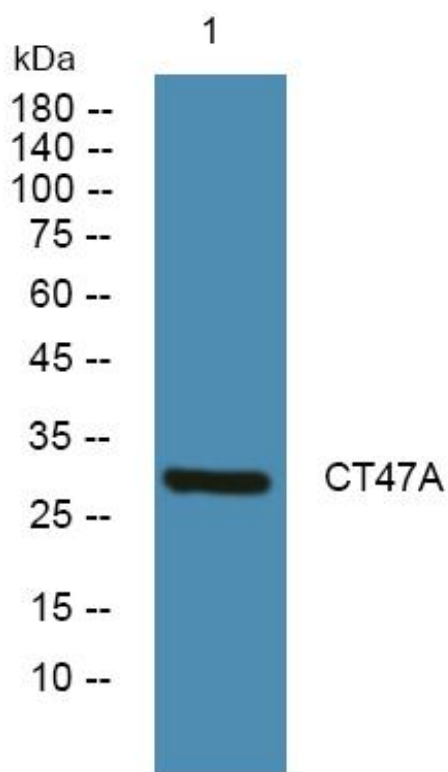
监督电话: 15950492658



### Usage suggestions

This product can be used in immunological reaction related experiments. For more information, please consult technical personnel.

## Products Images



Western Blot analysis of various cells using CT47A Monoclonal Antibody