



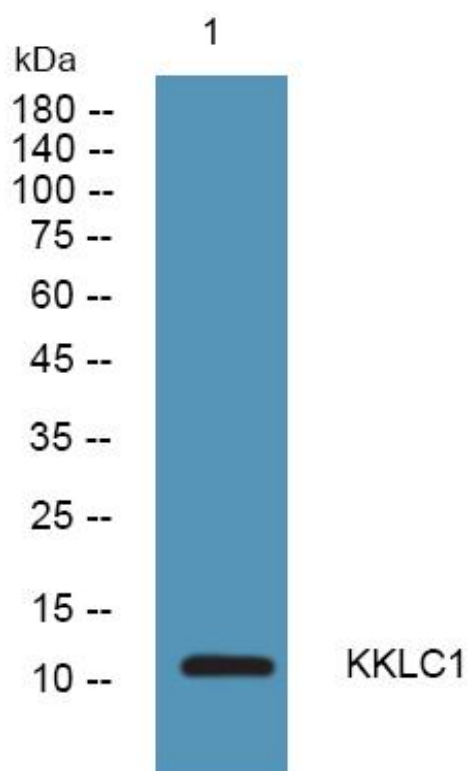
KKLC1 Monoclonal Antibody

Catalog No	BYmab-04999
Isotype	IgG
Reactivity	Human;Rat;Mouse;
Applications	WB
Gene Name	KKLC1 CXorf61
Protein Name	Kita-kyushu lung cancer antigen 1 (KK-LC-1) (Cancer/testis antigen 83) (CT83)
Immunogen	Synthesized peptide derived from human protein . at AA range: 30-110
Specificity	KKLC1 Monoclonal Antibody detects endogenous levels of protein.
Formulation	Liquid in PBS containing 50% glycerol, and 0.02% sodium azide.
Source	Monoclonal, Mouse,IgG
Purification	The antibody was affinity-purified from mouse antiserum by affinity-chromatography using epitope-specific immunogen.
Dilution	WB 1:500-2000
Concentration	1 mg/ml
Purity	≥90%
Storage Stability	-20°C/1 year
Synonyms	
Observed Band	12kD
Cell Pathway	Cell membrane ; Single-pass type II membrane protein .
Tissue Specificity	Specifically expressed in testis. Expressed by cancer cell lines.
Function	tissue specificity:Specifically expressed in testis. Expressed by cancer cell lines.,
Background	tissue specificity:Specifically expressed in testis. Expressed by cancer cell lines.,
matters needing attention	Avoid repeated freezing and thawing!
Usage suggestions	This product can be used in immunological reaction related experiments. For more information, please consult technical personnel.

Nanjing BYabscience technology Co.,Ltd



Products Images



Nanjing BYabs science technology Co.,Ltd

网址: www.njbybio.com

官方热线: 025-5229-8998

监督电话: 15950492658