



# PGFRL Monoclonal Antibody

Catalog No	BYmab-04993
Isotype	IgG
Reactivity	Human;Mouse;Rat
Applications	WB
Gene Name	PDGFRL PRLTS
Protein Name	Platelet-derived growth factor receptor-like protein (PDGFR-like protein) (PDGF receptor beta-like tumor suppressor)
Immunogen	Synthesized peptide derived from human protein . at AA range: 50-130
Specificity	PGFRL Monoclonal Antibody detects endogenous levels of protein.
Formulation	Liquid in PBS containing 50% glycerol, and 0.02% sodium azide.
Source	Monoclonal, Mouse,IgG
Purification	The antibody was affinity-purified from mouse antiserum by affinity-chromatography using epitope-specific immunogen.
Dilution	WB 1:500-2000
Concentration	1 mg/ml
Purity	≥90%
Storage Stability	-20°C/1 year
Synonyms	
Observed Band	41kD
Cell Pathway	Secreted .
Tissue Specificity	Expressed in colon, lung and liver.
Function	disease:Defects in PDGFRL are associated with colorectal cancer (CRC) [MIM:114500].,similarity:Contains 2 Ig-like C2-type (immunoglobulin-like) domains.,tissue specificity:Expressed in colon, lung and liver.,
Background	This gene encodes a protein with significant sequence similarity to the ligand binding domain of platelet-derived growth factor receptor beta. Mutations in this gene, or deletion of a chromosomal segment containing this gene, are associated with sporadic hepatocellular carcinomas, colorectal cancers, and non-small cell lung cancers. This suggests this gene product may function as a tumor suppressor. [provided by RefSeq, Jul 2008],

Nanjing BYabscience technology Co.,Ltd



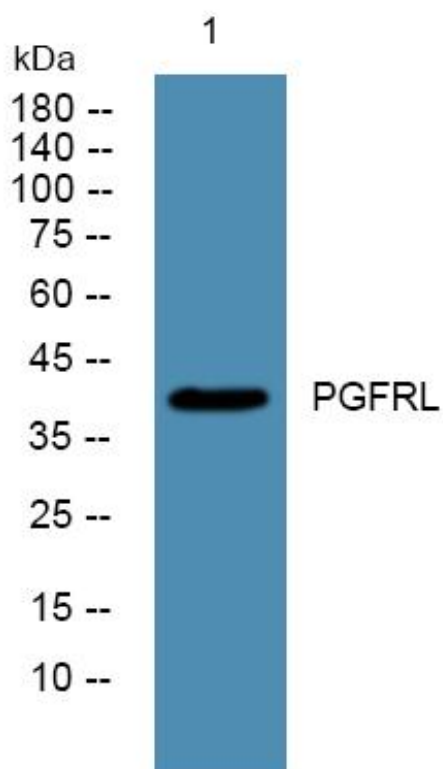
**matters needing attention**

Avoid repeated freezing and thawing!

**Usage suggestions**

This product can be used in immunological reaction related experiments. For more information, please consult technical personnel.

## Products Images



Western Blot analysis of various cells using PGFRL Monoclonal Antibody

Nanjing BYabscience technology Co.,Ltd

网址: [www.njbybio.com](http://www.njbybio.com)

官方热线: 025-5229-8998

监督电话: 15950492658