



FOXM1 Monoclonal Antibody

| | |
|--------------------|--|
| Catalog No | BYmab-04980 |
| Isotype | IgG |
| Reactivity | Human;Mouse;Rat |
| Applications | WB |
| Gene Name | FOXM1 FKHL16 HFH11 MPP2 WIN |
| Protein Name | Forkhead box protein M1 (Forkhead-related protein FKHL16) (Hepatocyte nuclear factor 3 forkhead homolog 11) (HFH-11) (HNF-3/fork-head homolog 11) (M-phase phosphoprotein 2) (MPM-2 reactive phosphoprot |
| Immunogen | Synthesized peptide derived from human protein . at AA range: 190-270 |
| Specificity | FOXM1 Monoclonal Antibody detects endogenous levels of protein. |
| Formulation | Liquid in PBS containing 50% glycerol, and 0.02% sodium azide. |
| Source | Monoclonal, Mouse,IgG |
| Purification | The antibody was affinity-purified from mouse antiserum by affinity-chromatography using epitope-specific immunogen. |
| Dilution | WB 1:500-2000 |
| Concentration | 1 mg/ml |
| Purity | ≥90% |
| Storage Stability | -20°C/1 year |
| Synonyms | |
| Observed Band | 83kD |
| Cell Pathway | Nucleus. |
| Tissue Specificity | Expressed in thymus, testis, small intestine, colon followed by ovary. Appears to be expressed only in adult organs containing proliferating/cycling cells or in response to growth factors. Also expressed in epithelial cell lines derived from tumors. Not expressed in resting cells. Isoform 2 is highly expressed in testis. |
| Function | alternative products:Isoform 1 and isoform 2 appear to be the only activators of gene transcription. Isoform 3, found in rat, does not seem to exist in human,developmental stage:Embryonic expression pattern: liver, lung, intestine, kidney, urinary tract; adult expression pattern: intestine, colon, testis and thymus.,domain:Within the protein there is a domain which acts as a transcriptional activator. Insertion of a splicing sequence within it inactivates this transcriptional activity, as it is the case for isoform 4.,function:Transcriptional activatory factor. May play a role in the control of cell |

Nanjing BYabscience technology Co.,Ltd



proliferation.,induction:Induced during liver regeneration and oxidative stress.,PTM:Phosphorylated in M (mitotic) phase.,similarity:Contains 1 fork-head DNA-binding domain.,tissue specificity:Expressed in thymus, testis, small intestine, colon followed by ovary. Appears to be expressed only

Background

The protein encoded by this gene is a transcriptional activator involved in cell proliferation. The encoded protein is phosphorylated in M phase and regulates the expression of several cell cycle genes, such as cyclin B1 and cyclin D1. Several transcript variants encoding different isoforms have been found for this gene. [provided by RefSeq, Jul 2011],

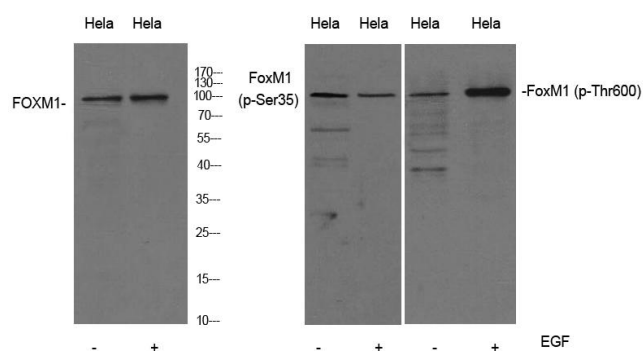
matters needing attention

Avoid repeated freezing and thawing!

Usage suggestions

This product can be used in immunological reaction related experiments. For more information, please consult technical personnel.

Products Images



Western Blot analysis of various cells using FOXM1 Monoclonal Antibody