



RT11 Monoclonal Antibody

Catalog No	BYmab-04977
Isotype	IgG
Reactivity	Human;Rat;Mouse;
Applications	WB
Gene Name	MRPS11 RPMS11 HCC2
Protein Name	28S ribosomal protein S11, mitochondrial (MRP-S11) (S11mt) (Cervical cancer proto-oncogene 2 protein) (HCC-2)
Immunogen	Synthesized peptide derived from human protein . at AA range: 10-90
Specificity	RT11 Monoclonal Antibody detects endogenous levels of protein.
Formulation	Liquid in PBS containing 50% glycerol, and 0.02% sodium azide.
Source	Monoclonal, Mouse,IgG
Purification	The antibody was affinity-purified from mouse antiserum by affinity-chromatography using epitope-specific immunogen.
Dilution	WB 1:500-2000
Concentration	1 mg/ml
Purity	≥90%
Storage Stability	-20°C/1 year
Synonyms	
Observed Band	21kD
Cell Pathway	Mitochondrion .
Tissue Specificity	Cervix,Human lung,Kidney,Muscle,
Function	alternative products:Experimental confirmation may be lacking for some isoforms,similarity:Belongs to the ribosomal protein S11P family.,subunit:Component of the mitochondrial ribosome small subunit (28S) which comprises a 12S rRNA and about 30 distinct proteins.,
Background	Mammalian mitochondrial ribosomal proteins are encoded by nuclear genes and help in protein synthesis within the mitochondrion. Mitochondrial ribosomes (mitoribosomes) consist of a small 28S subunit and a large 39S subunit. They have an estimated 75% protein to rRNA composition compared to prokaryotic ribosomes, where this ratio is reversed. Another difference between mammalian mitoribosomes and prokaryotic ribosomes is that the latter contain a 5S rRNA. Among different species, the proteins comprising the mitoribosome differ greatly

Nanjing BYabscience technology Co.,Ltd



in sequence, and sometimes in biochemical properties, which prevents easy recognition by sequence homology. This gene encodes a 28S subunit protein that contains a high level of sequence similarity with ribosomal protein S11P family members. A pseudogene corresponding to this gene is found on chromosome 20. Multiple transcript variants encoding different

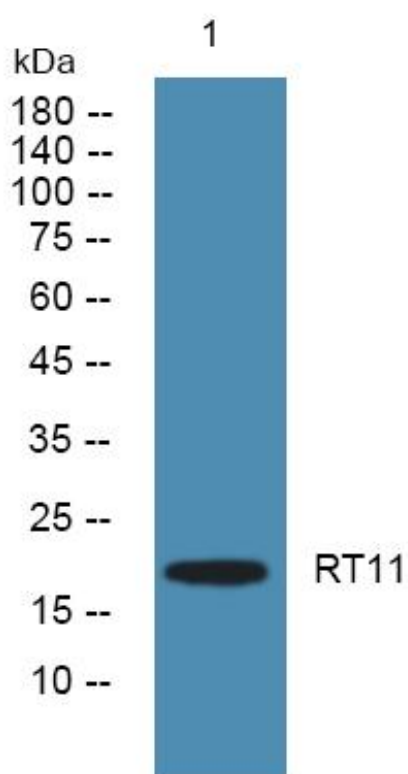
matters needing attention

Avoid repeated freezing and thawing!

Usage suggestions

This product can be used in immunological reaction related experiments. For more information, please consult technical personnel.

Products Images



Western Blot analysis of various cells using RT11 Monoclonal Antibody